

## ODC Polyclonal Antibody

### Description

<b>Product type</b>	Primary Antibody
<b>Code</b>	BT-AP06336
<b>Host</b>	Rabbit
<b>Isotype</b>	IgG
<b>Size</b>	20ul, 50ul, 100ul
<b>Immunogen</b>	The antiserum was produced against synthesized peptide derived from human SLC25A21. AA range:134-183
<b>Mol wt</b>	33303
<b>Species reactivity</b>	Human, Mouse, Rat
<b>Clonality</b>	Polyclonal
<b>Recommended application</b>	WB, IHC-p, ELISA
<b>Concentration</b>	1 mg/ml
<b>Full name</b>	ODC Antibody
<b>Synonyms</b>	SLC25A21; ODC; Mitochondrial 2-oxodicarboxylate carrier; Solute carrier family 25 member 21

**This product is for research use only, not for use in human, therapeutic or diagnostic procedure.**

### Background

SLC25A21 is a homolog of the *S. cerevisiae* ODC proteins, mitochondrial carriers that transport C5-C7 oxodicarboxylates across inner mitochondrial membranes. One of the species transported by ODC is 2-oxoadipate, a common intermediate in the catabolism of lysine, tryptophan, and hydroxylysine in mammals. Within mitochondria, 2-oxoadipate is converted into acetyl-CoA.

### Recommended Dilution

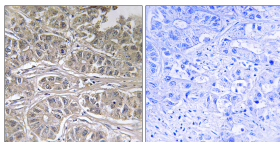
WB: 1: 500 - 1: 2000

IHC: 1: 100 - 1: 300

ELISA: 1: 40000

Not yet tested in other applications.

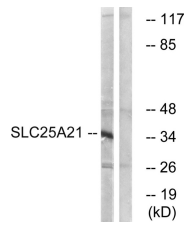
### Images



Immunohistochemistry analysis of paraffin-embedded human liver carcinoma tissue, using SLC25A21 Antibody. The picture on the right is blocked with the synthesized peptide.



Western Blot analysis of various cells using ODC Polyclonal Antibody



Western blot analysis of lysates from HepG2 cells, using SLC25A21 Antibody. The lane on the right is blocked with the synthesized peptide.

### Storage

-20°C for one year

501 Changsheng S Rd, Nanhu Dist, Jiaxing, Zhejiang, China

Tel: 86 21 31007137 | E-mail: [save@bt-laboratory.com](mailto:save@bt-laboratory.com) | [www.bt-laboratory.com](http://www.bt-laboratory.com)