

## O-FucT-1 Polyclonal Antibody

### Description

<b>Product type</b>	Primary Antibody
<b>Code</b>	BT-AP06340
<b>Host</b>	Rabbit
<b>Isotype</b>	IgG
<b>Size</b>	20ul, 50ul, 100ul
<b>Immunogen</b>	The antiserum was produced against synthesized peptide derived from human POFUT1. AA range:331-380
<b>Mol wt</b>	43956
<b>Species reactivity</b>	Human, Mouse, Rat
<b>Clonality</b>	Polyclonal
<b>Recommended application</b>	WB, IHC-p, ELISA
<b>Concentration</b>	1 mg/ml
<b>Full name</b>	O-FucT-1 Antibody
<b>Synonyms</b>	POFUT1; FUT12; KIAA0180; GDP-fucose protein O-fucosyltransferase 1; Peptide-O-fucosyltransferase 1; O-FucT-1

This product is for research use only, not for use in human, therapeutic or diagnostic procedure.

### Background

POFUT1 encodes a member of the glycosyltransferase O-Fuc family. This enzyme adds O-fucose through an O-glycosidic linkage to conserved serine or threonine residues in the epidermal growth factor-like repeats of a number of cell surface and secreted proteins. O-fucose glycans are involved in ligand-induced receptor signaling. Alternative splicing of this gene results in two transcript variants encoding different isoforms.

### Recommended Dilution

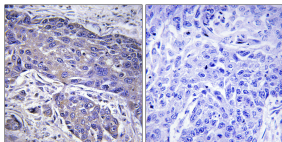
WB: 1: 500 - 1: 2000

IHC: 1: 100 - 1: 300

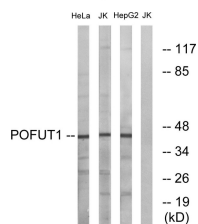
ELISA: 1: 40000

Not yet tested in other applications.

### Images



Immunohistochemistry analysis of paraffin-embedded human lung carcinoma tissue, using POFUT1 Antibody. The picture on the right is blocked with the synthesized peptide.



Western blot analysis of lysates from Jurkat, HeLa, and HepG2 cells, using POFUT1 Antibody. The lane on the right is blocked with the synthesized peptide.

## Storage

-20°C for one year

501 Changsheng S Rd, Nanhu Dist, Jiaxing, Zhejiang, China

Tel: 86 21 31007137 | E-mail: [save@bt-laboratory.com](mailto:save@bt-laboratory.com) | [www.bt-laboratory.com](http://www.bt-laboratory.com)