

OGCP Polyclonal Antibody

Description

Product type	Primary Antibody
Code	BT-AP06342
Host	Rabbit
Isotype	IgG
Size	20ul, 50ul, 100ul
Immunogen	The antiserum was produced against synthesized peptide derived from human SLC25A11. AA range:132-181
Mol wt	34062
Species reactivity	Human, Mouse, Rat
Clonality	Polyclonal
Recommended application	WB, ELISA
Concentration	1 mg/ml
Full name	OGCP Antibody
Synonyms	SLC25A11; SLC20A4; Mitochondrial 2-oxoglutarate/malate carrier protein; OGCP; Solute carrier family 25 member 11

This product is for research use only, not for use in human, therapeutic or diagnostic procedure.

Background

Inner membrane mitochondrial proteins are responsible for the transport of metabolites across the mitochondrial membrane. SLC25A11 (Solute carrier family 25 member 11), also known as Mitochondrial 2-oxoglutarate/malate carrier protein, is a 314 amino acid multi-pass transmembrane protein belonging to the mitochondrial carrier protein family. As an oxoglutarate/malate carrier, SLC25A11 transports 2-oxoglutarate across the inner mitochondrial membrane in an electroneutral exchange for dicarboxylic acids and malate. SLC25A11 also participates in other important metabolic processes, such as the oxoglutarate/isocitrate shuttle and the malate-aspartate shuttle, as well as in nitrogen metabolism and in gluconeogenesis from lactate. SLC25A11 contains 3 solcar repeats, which is typical of substrate carrier proteins involved in energy transfer.

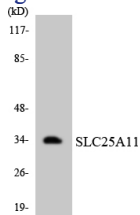
Recommended Dilution

WB: 1: 500 - 1: 2000

ELISA: 1: 10000

Not yet tested in other applications.

Images



Western blot analysis of the lysates from HepG2 cells using SLC25A11 antibody.

Storage

-20°C for one year

