

Olfactory receptor 2T2/35 Polyclonal Antibody

Description

| | |
|--------------------------------|------------------------------------------------------------------------------------------------------------------------------|
| Product type | Primary Antibody |
| Code | BT-AP06426 |
| Host | Rabbit |
| Isotype | IgG |
| Size | 20ul, 50ul, 100ul |
| Immunogen | The antiserum was produced against synthesized peptide derived from human OR2T2/2T35. AA range:61-110 |
| Mol wt | 36101 |
| Species reactivity | Human |
| Clonality | Polyclonal |
| Recommended application | WB, IF, ELISA |
| Concentration | 1 mg/ml |
| Full name | Olfactory receptor 2T2/35 Antibody |
| Synonyms | OR2T2; OR2T2P; Olfactory receptor 2T2; Olfactory receptor OR1-43; OR2T35; Olfactory receptor 2T35; Olfactory receptor OR1-66 |

This product is for research use only, not for use in human, therapeutic or diagnostic procedure.

Background

Olfactory receptors interact with odorant molecules in the nose, to initiate a neuronal response that triggers the perception of a smell. The olfactory receptor proteins are members of a large family of G-protein-coupled receptors (GPCR) arising from single coding-exon genes. Olfactory receptors share a 7-transmembrane domain structure with many neurotransmitter and hormone receptors and are responsible for the recognition and G protein-mediated transduction of odorant signals. The olfactory receptor gene family is the largest in the genome. The nomenclature assigned to the olfactory receptor genes and proteins for this organism is independent of other organisms.

Recommended Dilution

WB: 1: 500 - 1: 2000

IF: 1: 200 - 1: 1000

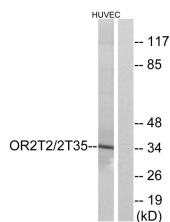
ELISA: 1: 10000

Not yet tested in other applications.

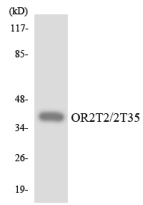
Images



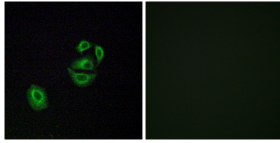
Western blot analysis of various cells using Olfactory receptor 2T2/35 Polyclonal Antibody diluted at 1:500



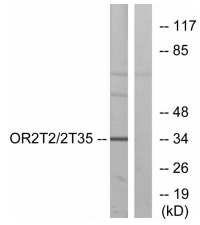
Western blot analysis of lysates from HUVEC cells, using OR2T2/2T35 Antibody. The lane on the right is blocked with the synthesized peptide.



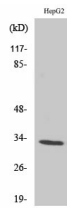
Western blot analysis of the lysates from HepG2 cells using OR2T2/2T35 antibody.



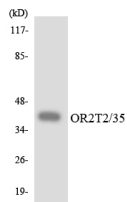
Immunofluorescence analysis of A549 cells, using OR2T2/2T35 Antibody. The picture on the right is blocked with the synthesized peptide.



Western blot analysis of lysates from HepG2 cells, using OR2T2/2T35 Antibody. The lane on the right is blocked with the synthesized peptide.



Western Blot analysis of various cells using Olfactory receptor 2T2/35 Polyclonal Antibody



Western blot analysis of the lysates from HeLa cells using OR2T2/35 antibody.

Storage

-20°C for one year

501 Changsheng S Rd, Nanhu Dist, Jiaxing, Zhejiang, China

Tel: 86 21 31007137 | E-mail: save@bt-laboratory.com | www.bt-laboratory.com