

Olfactory receptor 4K14 Polyclonal Antibody

Description

Product type	Primary Antibody
Code	BT-AP06451
Host	Rabbit
Isotype	IgG
Size	20ul, 50ul, 100ul
Immunogen	The antiserum was produced against synthesized peptide derived from human OR4K14. AA range:261-310
Mol wt	35053
Species reactivity	Human, Monkey
Clonality	Polyclonal
Recommended application	WB, ELISA
Concentration	1 mg/ml
Full name	Olfactory receptor 4K14 Antibody
Synonyms	OR4K14; Olfactory receptor 4K14; Olfactory receptor OR14-22

This product is for research use only, not for use in human, therapeutic or diagnostic procedure.

Background

Olfactory receptors interact with odorant molecules in the nose, to initiate a neuronal response that triggers the perception of a smell. The olfactory receptor proteins are members of a large family of G-protein-coupled receptors (GPCR) arising from single coding-exon genes. Olfactory receptors share a 7-transmembrane domain structure with many neurotransmitter and hormone receptors and are responsible for the recognition and G protein-mediated transduction of odorant signals. The olfactory receptor gene family is the largest in the genome. The nomenclature assigned to the olfactory receptor genes and proteins for this organism is independent of other organisms.

Recommended Dilution

WB: 1: 500 - 1: 2000

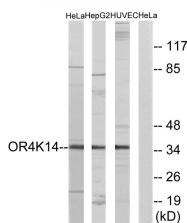
ELISA: 1: 10000

Not yet tested in other applications.

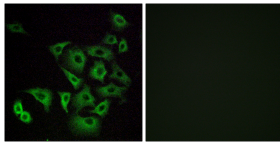
Images



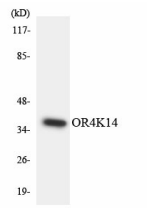
Western Blot analysis of various cells using Olfactory receptor 4K14 Polyclonal Antibody diluted at 1:2000



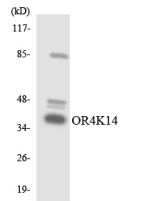
Western blot analysis of lysates from HeLa, HepG2, and HUVEC cells, using OR4K14 Antibody. The lane on the right is blocked with the synthesized peptide.



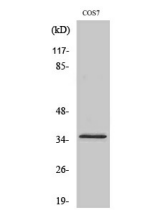
Immunofluorescence analysis of A549 cells, using OR4K14 Antibody. The picture on the right is blocked with the synthesized peptide.



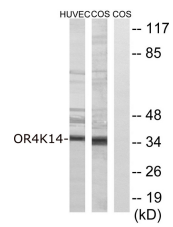
Western blot analysis of the lysates from HepG2 cells using OR4K14 antibody.



Western blot analysis of the lysates from COLO205 cells using OR4K14 antibody.



Western Blot analysis of various cells using Olfactory receptor 4K14 Polyclonal Antibody diluted at 1:2000



Western blot analysis of lysates from COS7 and HUVEC cells, using OR4K14 Antibody. The lane on the right is blocked with the synthesized peptide.

Storage

-20°C for one year

501 Changsheng S Rd, Nanhu Dist, Jiaxing, Zhejiang, China

Tel: 86 21 31007137 | E-mail: save@bt-laboratory.com | www.bt-laboratory.com