

## Olfactory receptor 5M11 Polyclonal Antibody

### Description

|                                |  |
|--------------------------------|--|
| <b>Product type</b>            | Primary Antibody   |
| <b>Code</b>                    | BT-AP06518   |
| <b>Host</b>                    | Rabbit   |
| <b>Isotype</b>                 | IgG  |
| <b>Size</b>                    | 20ul, 50ul, 100ul  |
| <b>Immunogen</b>               | The antiserum was produced against synthesized peptide derived from human OR5M11. AA range:233-282 |
| <b>Mol wt</b>                  | 34450  |
| <b>Species reactivity</b>      | Human  |
| <b>Clonality</b>               | Polyclonal   |
| <b>Recommended application</b> | WB, IF, ELISA  |
| <b>Concentration</b>           | 1 mg/ml  |
| <b>Full name</b>               | Olfactory receptor 5M11 Antibody   |
| <b>Synonyms</b>                | OR5M11; Olfactory receptor 5M11  |

**This product is for research use only, not for use in human, therapeutic or diagnostic procedure.**

### Background

Olfactory receptors interact with odorant molecules in the nose, to initiate a neuronal response that triggers the perception of a smell. The olfactory receptor proteins are members of a large family of G-protein-coupled receptors (GPCR) arising from single coding-exon genes. Olfactory receptors share a 7-transmembrane domain structure with many neurotransmitter and hormone receptors and are responsible for the recognition and G protein-mediated transduction of odorant signals. The olfactory receptor gene family is the largest in the genome. The nomenclature assigned to the olfactory receptor genes and proteins for this organism is independent of other organisms.

### Recommended Dilution

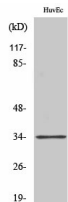
WB: 1: 500 - 1: 2000

IF: 1: 200 - 1: 1000

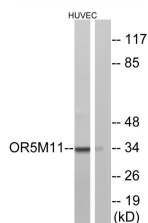
ELISA: 1: 5000

Not yet tested in other applications.

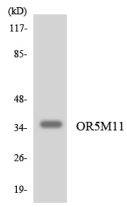
### Images



Western Blot analysis of various cells using Olfactory receptor 5M11 Polyclonal Antibody



Western blot analysis of lysates from HUVEC cells, using OR5M11 Antibody. The lane on the right is blocked with the synthesized peptide.



Western blot analysis of the lysates from K562 cells using OR5M11 antibody.

### Storage

-20°C for one year

501 Changsheng S Rd, Nanhu Dist, Jiaxing, Zhejiang, China

Tel: 86 21 31007137 | E-mail: [save@bt-laboratory.com](mailto:save@bt-laboratory.com) | [www.bt-laboratory.com](http://www.bt-laboratory.com)