

Olfactory receptor 5M3 Polyclonal Antibody

Description

| | |
|--------------------------------|--|
| Product type | Primary Antibody |
| Code | BT-AP06519 |
| Host | Rabbit |
| Isotype | IgG |
| Size | 20ul, 50ul, 100ul |
| Immunogen | The antiserum was produced against synthesized peptide derived from human OR5M3. AA range:53-102 |
| Mol wt | 35156 |
| Species reactivity | Human |
| Clonality | Polyclonal |
| Recommended application | WB, IF, ELISA |
| Concentration | 1 mg/ml |
| Full name | Olfactory receptor 5M3 Antibody |
| Synonyms | OR5M3; Olfactory receptor 5M3; Olfactory receptor OR11-191 |

This product is for research use only, not for use in human, therapeutic or diagnostic procedure.

Background

Olfactory receptors interact with odorant molecules in the nose, to initiate a neuronal response that triggers the perception of a smell. The olfactory receptor proteins are members of a large family of G-protein-coupled receptors (GPCR) arising from single coding-exon genes. Olfactory receptors share a 7-transmembrane domain structure with many neurotransmitter and hormone receptors and are responsible for the recognition and G protein-mediated transduction of odorant signals. The olfactory receptor gene family is the largest in the genome. The nomenclature assigned to the olfactory receptor genes and proteins for this organism is independent of other organisms.

Recommended Dilution

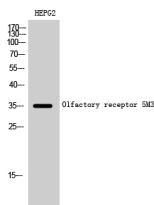
WB: 1: 500 - 1: 2000

IF: 1: 200 - 1: 1000

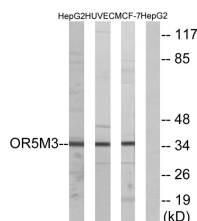
ELISA: 1: 5000

Not yet tested in other applications.

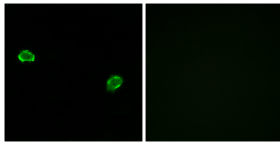
Images



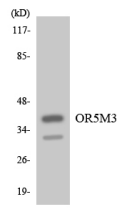
Western Blot analysis of HEPG2 cells using Olfactory receptor 5M3 Polyclonal Antibody diluted at 1:1000



Western blot analysis of lysates from HepG2, HUVEC, and MCF-7 cells, using OR5M3 Antibody. The lane on the right is blocked with the synthesized peptide.



Immunofluorescence analysis of MCF7 cells, using OR5M3 Antibody. The picture on the right is blocked with the synthesized peptide.



Western blot analysis of the lysates from COLO205 cells using OR5M3 antibody.

Storage

-20°C for one year

501 Changsheng S Rd, Nanhu Dist, Jiaxing, Zhejiang, China

Tel: 86 21 31007137 | E-mail: save@bt-laboratory.com | www.bt-laboratory.com