

GSK3 alpha/beta(Phospho Tyr279/216) Polyclonal Antibody

Description

Product type	Primary Antibody
Code	BT-AP06543
Host	Rabbit
Isotype	IgG
Size	100ul, 50ul, 20ul
Immunogen	The antiserum was produced against synthesized peptide derived from human GSK3 alpha/beta around the phosphorylation site of Tyr279/216. AA range:246-295
Mol wt	50981
Species reactivity	Human, Mouse, Rat
Clonality	Polyclonal
Recommended application	IF, ICC, WB, IHC-p, ELISA
Concentration	1 mg/ml
Full name	Glycogen synthase kinase-3 alpha/beta
Synonyms	Glycogen synthase kinase-3 alpha/beta; GSK3A; Glycogen synthase kinase-3 alpha; GSK-3 alpha; Serine/threonine-protein kinase GSK3A; GSK3B; Glycogen synthase kinase-3 beta; GSK-3 beta; Serine/threonine-protein kinase GSK3B

This product is for research use only, not for use in human, therapeutic or diagnostic procedure.

Background

This gene encodes a multifunctional Ser/Thr protein kinase that is implicated in the control of several regulatory proteins including glycogen synthase, and transcription factors, such as JUN. It also plays a role in the WNT and PI3K signaling pathways, as well as regulates the production of beta-amyloid peptides associated with Alzheimer's disease.

Recommended Dilution

WB: 1: 500 - 1: 2000

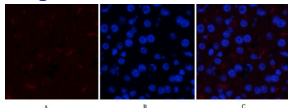
IHC-p: 1: 100 - 1: 300

IF: 1: 50 - 1: 200

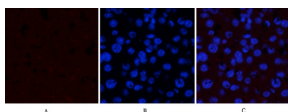
ELISA: 1: 20000

Not yet tested in other applications.

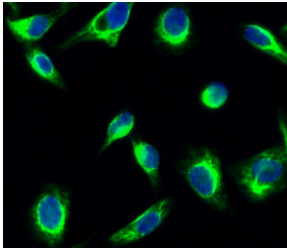
Images



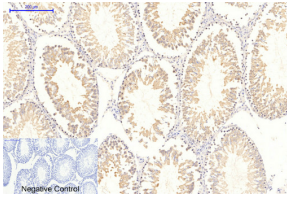
Immunofluorescence analysis of HeLa cell. 1,GSK3 α/β (phospho Tyr279/216) Polyclonal Antibody(Green) was diluted at 1:200(4°C overnight). 2 DAPI(blue) 10min.



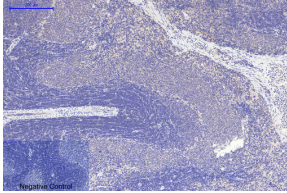
Immunofluorescence analysis of mouse-liver tissue. 1,GSK3 α/β (phospho Tyr279/216) Polyclonal Antibody(Red) was diluted at 1:200(4°C overnight). 2, Cy3 labeled Secondary antibody was diluted at 1:300(room temperature, 50min).3, Picture B: DAPI(blue) 10min. Picture A:Target. Picture B: DAPI. Picture C: merge of A+B



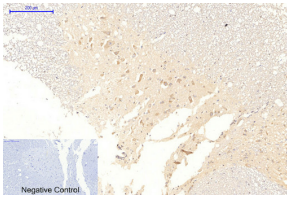
Immunofluorescence analysis of mouse-liver tissue. 1,GSK3 α / β (phospho Tyr279/216) Polyclonal Antibody(Red) was diluted at 1:200(4°C overnight). 2, Cy3 labeled Secondary antibody was diluted at 1:300(room temperature, 50min).3, Picture B: DAPI(blue) 10min. Picture A:Target. Picture B: DAPI. Picture C: merge of A+B



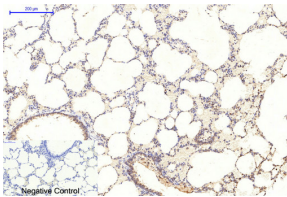
Immunohistochemical analysis of paraffin-embedded Human-Tonsil tissue. 1,GSK3 α / β (phospho Tyr279/216) Polyclonal Antibody was diluted at 1:200(4°C overnight). 2, Sodium citrate pH 6.0 was used for antibody retrieval(>98°C,20min). 3,Secondary antibody was diluted at 1:200(room temperature, 30min). Negative control was used by secondary antibody only.



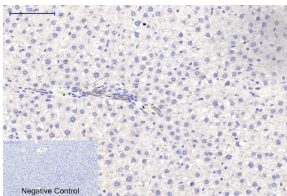
Immunohistochemical analysis of paraffin-embedded Rat-liver tissue. 1,GSK3 α / β (phospho Tyr279/216) Polyclonal Antibody was diluted at 1:200(4°C overnight). 2, Sodium citrate pH 6.0 was used for antibody retrieval(>98°C,20min). 3,Secondary antibody was diluted at 1:200(room temperature, 30min). Negative control was used by secondary antibody only.



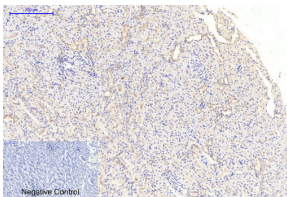
Immunohistochemical analysis of paraffin-embedded Rat-lung tissue. 1,GSK3 α / β (phospho Tyr279/216) Polyclonal Antibody was diluted at 1:200(4°C overnight). 2, Sodium citrate pH 6.0 was used for antibody retrieval(>98°C,20min). 3,Secondary antibody was diluted at 1:200(room temperature, 30min). Negative control was used by secondary antibody only.



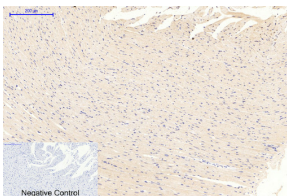
Immunohistochemical analysis of paraffin-embedded Rat-kidney tissue. 1,GSK3 α / β (phospho Tyr279/216) Polyclonal Antibody was diluted at 1:200(4°C overnight). 2, Sodium citrate pH 6.0 was used for antibody retrieval(>98°C,20min). 3,Secondary antibody was diluted at 1:200(room temperature, 30min). Negative control was used by secondary antibody only.



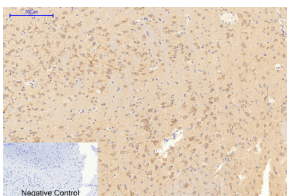
Immunohistochemical analysis of paraffin-embedded Rat-spinal-cord tissue. 1,GSK3 α / β (phospho Tyr279/216) Polyclonal Antibody was diluted at 1:200(4°C overnight). 2, Sodium citrate pH 6.0 was used for antibody retrieval(>98°C,20min). 3,Secondary antibody was diluted at 1:200(room temperature, 30min). Negative control was used by secondary antibody only.



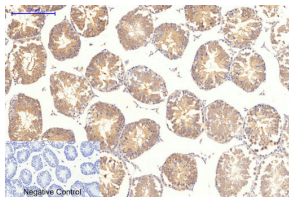
Immunohistochemical analysis of paraffin-embedded Rat-brain tissue. 1,GSK3 α / β (phospho Tyr279/216) Polyclonal Antibody was diluted at 1:200(4°C overnight). 2, Sodium citrate pH 6.0 was used for antibody retrieval(>98°C,20min). 3,Secondary antibody was diluted at 1:200(room temperature, 30min). Negative control was used by secondary antibody only.



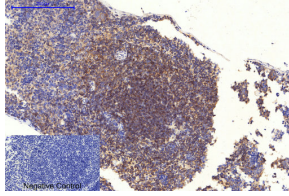
Immunohistochemical analysis of paraffin-embedded Rat-spleen tissue. 1,GSK3 α / β (phospho Tyr279/216) Polyclonal Antibody was diluted at 1:200(4°C overnight). 2, Sodium citrate pH 6.0 was used for antibody retrieval(>98°C,20min). 3,Secondary antibody was diluted at 1:200(room temperature, 30min). Negative control was used by secondary antibody only.



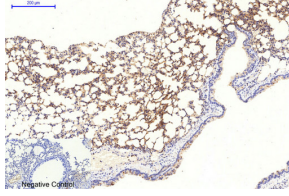
Immunohistochemical analysis of paraffin-embedded Mouse-heart tissue. 1,GSK3 α / β (phospho Tyr279/216) Polyclonal Antibody was diluted at 1:200(4°C overnight). 2, Sodium citrate pH 6.0 was used for antibody retrieval(>98°C,20min). 3,Secondary antibody was diluted at 1:200(room temperature, 30min). Negative control was used by secondary antibody only.



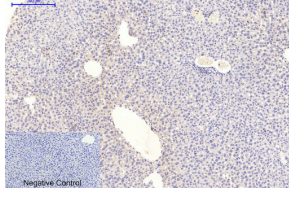
Immunohistochemical analysis of paraffin-embedded Mouse-testis tissue. 1,GSK3 α/β (phospho Tyr279/216) Polyclonal Antibody was diluted at 1:200(4°C overnight). 2, Sodium citrate pH 6.0 was used for antibody retrieval(>98°C,20min). 3,Secondary antibody was diluted at 1:200(room temperature, 30min). Negative control was used by secondary antibody only.



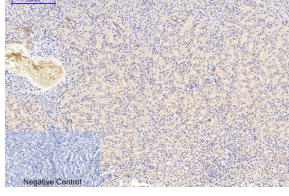
Immunohistochemical analysis of paraffin-embedded Mouse-liver tissue. 1,GSK3 α/β (phospho Tyr279/216) Polyclonal Antibody was diluted at 1:200(4°C overnight). 2, Sodium citrate pH 6.0 was used for antibody retrieval(>98°C,20min). 3,Secondary antibody was diluted at 1:200(room temperature, 30min). Negative control was used by secondary antibody only.



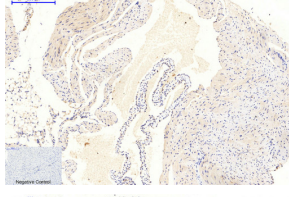
Immunohistochemical analysis of paraffin-embedded Mouse-colon tissue. 1,GSK3 α/β (phospho Tyr279/216) Polyclonal Antibody was diluted at 1:200(4°C overnight). 2, Sodium citrate pH 6.0 was used for antibody retrieval(>98°C,20min). 3,Secondary antibody was diluted at 1:200(room temperature, 30min). Negative control was used by secondary antibody only.



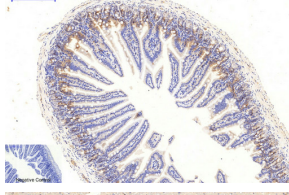
Immunohistochemical analysis of paraffin-embedded Human-liver tissue. 1,GSK3 α/β (phospho Tyr279/216) Polyclonal Antibody was diluted at 1:200(4°C overnight). 2, Sodium citrate pH 6.0 was used for antibody retrieval(>98°C,20min). 3,Secondary antibody was diluted at 1:200(room temperature, 30min). Negative control was used by secondary antibody only.



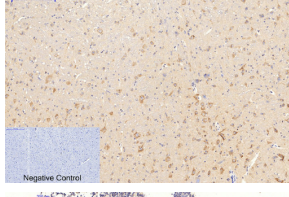
Immunohistochemical analysis of paraffin-embedded Mouse-lung tissue. 1,GSK3 α/β (phospho Tyr279/216) Polyclonal Antibody was diluted at 1:200(4°C overnight). 2, Sodium citrate pH 6.0 was used for antibody retrieval(>98°C,20min). 3,Secondary antibody was diluted at 1:200(room temperature, 30min). Negative control was used by secondary antibody only.



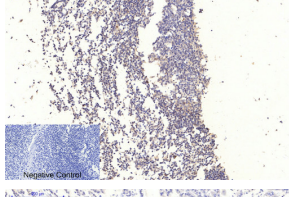
Immunohistochemical analysis of paraffin-embedded Mouse-kidney tissue. 1,GSK3 α/β (phospho Tyr279/216) Polyclonal Antibody was diluted at 1:200(4°C overnight). 2, Sodium citrate pH 6.0 was used for antibody retrieval(>98°C,20min). 3,Secondary antibody was diluted at 1:200(room temperature, 30min). Negative control was used by secondary antibody only.



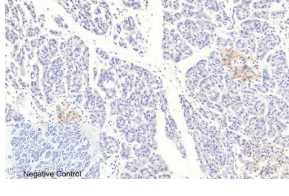
Immunohistochemical analysis of paraffin-embedded Mouse-brain tissue. 1,GSK3 α/β (phospho Tyr279/216) Polyclonal Antibody was diluted at 1:200(4°C overnight). 2, Sodium citrate pH 6.0 was used for antibody retrieval(>98°C,20min). 3,Secondary antibody was diluted at 1:200(room temperature, 30min). Negative control was used by secondary antibody only.



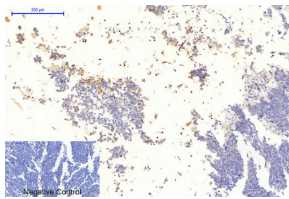
Immunohistochemical analysis of paraffin-embedded Mouse-spleen tissue. 1,GSK3 α/β (phospho Tyr279/216) Polyclonal Antibody was diluted at 1:200(4°C overnight). 2, Sodium citrate pH 6.0 was used for antibody retrieval(>98°C,20min). 3,Secondary antibody was diluted at 1:200(room temperature, 30min). Negative control was used by secondary antibody only.



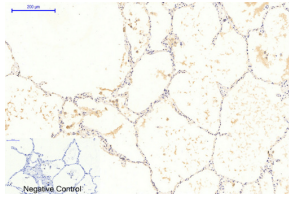
Immunohistochemical analysis of paraffin-embedded Human lung cancer. Antibody was diluted at 1:100(4°C overnight). High-pressure and temperature Tris-EDTA,pH8.0 was used for antigen retrieval. Negative control (right) obtained from antibody was pre-absorbed by immunogen peptide.



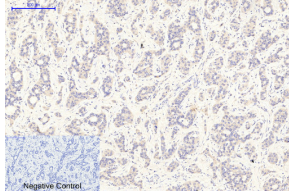
Immunohistochemical analysis of paraffin-embedded Human-liver-cancer tissue. 1,GSK3 α/β (phospho Tyr279/216) Polyclonal Antibody was diluted at 1:200(4°C overnight). 2, Sodium citrate pH 6.0 was used for antibody retrieval(>98°C,20min). 3,Secondary antibody was diluted at 1:200(room temperature, 30min). Negative control was used by secondary antibody only.



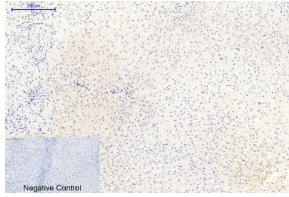
Immunohistochemical analysis of paraffin-embedded Human-liver-cancer tissue. 1, TIMP-1 Polyclonal Antibody was diluted at 1:200(4°C overnight). 2, Sodium citrate pH 6.0 was used for antibody retrieval(>98°C,20min). 3, Secondary antibody was diluted at 1:200(room temperature, 30min). Negative control was used by secondary antibody only.



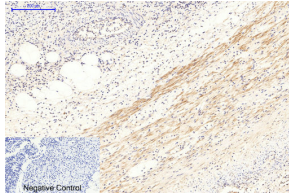
Immunohistochemical analysis of paraffin-embedded Human-lung-cancer tissue. 1, GSK3α/β (phospho Tyr279/216) Polyclonal Antibody was diluted at 1:200(4°C overnight). 2, Sodium citrate pH 6.0 was used for antibody retrieval(>98°C,20min). 3, Secondary antibody was diluted at 1:200(room temperature, 30min). Negative control was used by secondary antibody only.



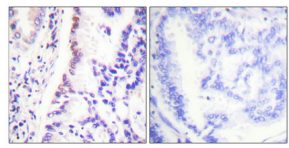
Immunohistochemical analysis of paraffin-embedded Human-stomach-cancer tissue. 1, GSK3α/β (phospho Tyr279/216) Polyclonal Antibody was diluted at 1:200(4°C overnight). 2, Sodium citrate pH 6.0 was used for antibody retrieval(>98°C,20min). 3, Secondary antibody was diluted at 1:200(room temperature, 30min). Negative control was used by secondary antibody only.



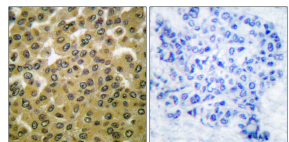
Immunohistochemical analysis of paraffin-embedded Human-Appendix tissue. 1, GSK3α/β (phospho Tyr279/216) Polyclonal Antibody was diluted at 1:200(4°C overnight). 2, Sodium citrate pH 6.0 was used for antibody retrieval(>98°C,20min). 3, Secondary antibody was diluted at 1:200(room temperature, 30min). Negative control was used by secondary antibody only.



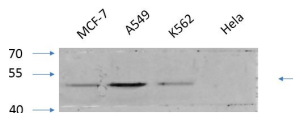
Immunohistochemical analysis of paraffin-embedded Rat-heart tissue. 1, GSK3α/β (phospho Tyr279/216) Polyclonal Antibody was diluted at 1:200(4°C overnight). 2, Sodium citrate pH 6.0 was used for antibody retrieval(>98°C,20min). 3, Secondary antibody was diluted at 1:200(room temperature, 30min). Negative control was used by secondary antibody only.



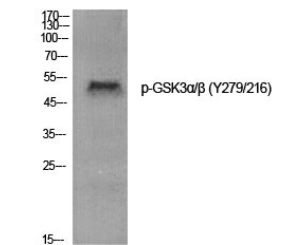
Immunohistochemical analysis of paraffin-embedded Rat-testis tissue. 1, GSK3α/β (phospho Tyr279/216) Polyclonal Antibody was diluted at 1:200(4°C overnight). 2, Sodium citrate pH 6.0 was used for antibody retrieval(>98°C,20min). 3, Secondary antibody was diluted at 1:200(room temperature, 30min). Negative control was used by secondary antibody only.



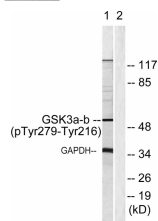
Immunohistochemistry analysis of paraffin-embedded human breast carcinoma, using GSK3 alpha/beta (Phospho-Tyr279/216) Antibody. The picture on the right is blocked with the phospho peptide.



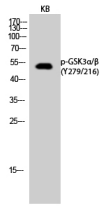
Western Blot analysis of various cells using primary antibody diluted at 1:1000(4°C overnight). Secondary antibody: Goat Anti-rabbit IgG IRDye 800(diluted at 1:5000, 25°C, 1 hour).



Western Blot analysis of various cells using Phospho-GSK3α/β (Y279/216) Polyclonal Antibody



Western Blot analysis of KB cells using Phospho-GSK3α/β (Y279/216) Polyclonal Antibody



Western blot analysis of lysates from HeLa cells, using GSK3 alpha/beta (Phospho-Tyr279/216) Antibody. The lane on the right is blocked with the phospho peptide.

Storage

-20°C for 1 year

501 Changsheng S Rd, Nanhu Dist, Jiaxing, Zhejiang, China

Tel: 86 21 31007137 | E-mail: save@bt-laboratory.com | www.bt-laboratory.com