

## Olfactory receptor 8J3 Polyclonal Antibody

### Description

<b>Product type</b>	Primary Antibody
<b>Code</b>	BT-AP06554
<b>Host</b>	Rabbit
<b>Isotype</b>	IgG
<b>Size</b>	20ul, 50ul, 100ul
<b>Immunogen</b>	The antiserum was produced against synthesized peptide derived from human OR8J3. AA range:232-281
<b>Mol wt</b>	35481
<b>Species reactivity</b>	Human
<b>Clonality</b>	Polyclonal
<b>Recommended application</b>	WB, IF, ELISA
<b>Concentration</b>	1 mg/ml
<b>Full name</b>	Olfactory receptor 8J3 Antibody
<b>Synonyms</b>	OR8J3; Olfactory receptor 8J3; Olfactory receptor OR11-173

**This product is for research use only, not for use in human, therapeutic or diagnostic procedure.**

### Background

OR8J3 (Olfactory Receptor Family 8 Subfamily J Member 3) is a Protein Coding gene. Among its related pathways are Signaling by GPCR and Olfactory Signaling Pathway. Gene Ontology (GO) annotations related to OR8J3 include G-protein coupled receptor activity and odorant binding. An important paralog of OR8J3 is ENSG00000279961.

### Recommended Dilution

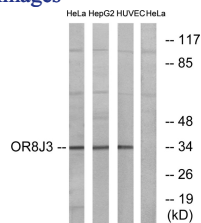
WB: 1: 500 - 1: 2000

IF: 1: 200 - 1: 1000

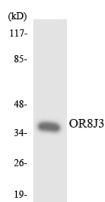
ELISA: 1: 10000

Not yet tested in other applications.

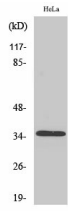
### Images



Western blot analysis of lysates from HeLa, HepG2, and HUVEC cells, using OR8J3 Antibody. The lane on the right is blocked with the synthesized peptide.



Western blot analysis of the lysates from K562 cells using OR8J3 antibody.



Western Blot analysis of various cells using Olfactory receptor 8J3 Polyclonal Antibody

### Storage

-20°C for one year

501 Changsheng S Rd, Nanhu Dist, Jiaxing, Zhejiang, China

Tel: 86 21 31007137 | E-mail: [save@bt-laboratory.com](mailto:save@bt-laboratory.com) | [www.bt-laboratory.com](http://www.bt-laboratory.com)