

HDAC1(Phospho Ser421) Polyclonal Antibody

Description

Product type	Primary Antibody
Code	BT-AP06566
Host	Rabbit
Isotype	IgG
Size	100ul, 50ul, 20ul
Immunogen	The antiserum was produced against synthesized peptide derived from human HDAC1 around the phosphorylation site of Ser421. AA range:387-436
Mol wt	55103
Species reactivity	Human, Mouse, Rat
Clonality	Polyclonal
Recommended application	WB, IHC-p, IF, ELISA
Concentration	1 mg/ml
Full name	Histone deacetylase 1
Synonyms	Histone deacetylase 1; HDAC1; RPD3L1; Histone deacetylase 1; HD1

This product is for research use only, not for use in human, therapeutic or diagnostic procedure.

Background

Histone acetylation and deacetylation, catalyzed by multisubunit complexes, play a key role in the regulation of eukaryotic gene expression. The protein encoded by this gene belongs to the histone deacetylase/acuc/apha family and is a component of the histone deacetylase complex. It also interacts with retinoblastoma tumor-suppressor protein and this complex is a key element in the control of cell proliferation and differentiation. Together with metastasis-associated protein-2, it deacetylates p53 and modulates its effect on cell growth and apoptosis.

Recommended Dilution

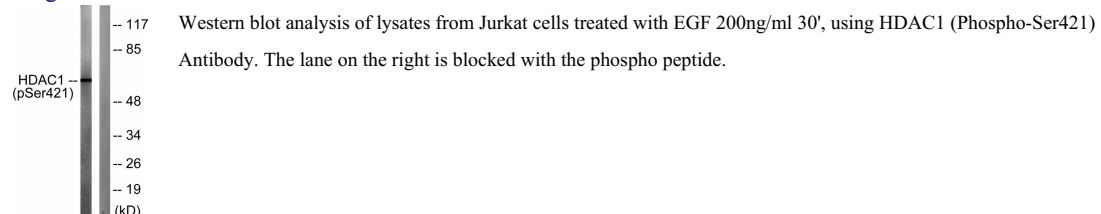
WB: 1: 500 - 1: 2000

IHC-p: 1: 100 - 1: 300

ELISA: 1: 5000

Not yet tested in other applications.

Images



Storage

-20°C for 1 year