

## Op18 Polyclonal Antibody

### Description

<b>Product type</b>	Primary Antibody
<b>Code</b>	BT-AP06573
<b>Host</b>	Rabbit
<b>Isotype</b>	IgG
<b>Size</b>	20ul, 50ul, 100ul
<b>Immunogen</b>	The antiserum was produced against synthesized peptide derived from human Stathmin 1. AA range:21-70
<b>Mol wt</b>	17303
<b>Species reactivity</b>	Human, Mouse, Rat
<b>Clonality</b>	Polyclonal
<b>Recommended application</b>	WB, IHC-p, ELISA
<b>Concentration</b>	1 mg/ml
<b>Full name</b>	Op18 Antibody
<b>Synonyms</b>	STMN1; C1orf215; LAP18; OP18; Stathmin; Leukemia-associated phosphoprotein p18; Metablastin; Oncoprotein 18; Op18; Phosphoprotein p19; pp19; Prosolin; Protein Pr22; pp17

**This product is for research use only, not for use in human, therapeutic or diagnostic procedure.**

### Background

STMN1 belongs to the stathmin family of genes. It encodes a ubiquitous cytosolic phosphoprotein proposed to function as an intracellular relay integrating regulatory signals of the cellular environment. The encoded protein is involved in the regulation of the microtubule filament system by destabilizing microtubules. It prevents assembly and promotes disassembly of microtubules. Multiple transcript variants encoding different isoforms have been found for this gene.

### Recommended Dilution

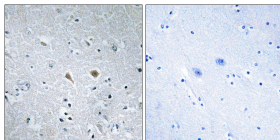
WB: 1: 500 - 1: 2000

IHC: 1: 100 - 1: 300

ELISA: 1: 20000

Not yet tested in other applications.

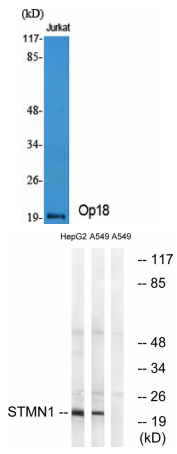
### Images



Immunohistochemistry analysis of paraffin-embedded human brain tissue, using Stathmin 1 Antibody. The picture on the right is blocked with the synthesized peptide.



Western Blot analysis of HepG2 cells using Op18 Polyclonal Antibody



## Western Blot analysis of various cells using Op18 Polyclonal Antibody

Western blot analysis of lysates from HepG2 and A549 cells, treated with PMA 1ng/ml 15', using Stathmin 1 Antibody. The lane on the right is blocked with the synthesized peptide.

### Storage

-20°C for one year

501 Changsheng S Rd, Nanhu Dist, Jiaxing, Zhejiang, China

Tel: 86 21 31007137 | E-mail: [save@bt-laboratory.com](mailto:save@bt-laboratory.com) | [www.bt-laboratory.com](http://www.bt-laboratory.com)