

OPN Polyclonal Antibody

Description

Product type	Primary Antibody
Code	BT-AP06578
Host	Rabbit
Isotype	IgG
Size	20ul, 50ul, 100ul
Immunogen	The antiserum was produced against synthesized peptide derived from human Osteopontin. AA range:261-310
Mol wt	35423
Species reactivity	Human, Mouse, Rat
Clonality	Polyclonal
Recommended application	WB, IHC-p, ELISA
Concentration	1 mg/ml
Full name	OPN Antibody
Synonyms	SPP1; BNSP; OPN; PSEC0156; Osteopontin; Bone sialoprotein 1; Nephropontin; Secreted phosphoprotein 1; SPP-1; Urinary stone protein; Uropontin

This product is for research use only, not for use in human, therapeutic or diagnostic procedure.

Background

Secreted phosphoprotein 1 encoded by SPP1 is involved in the attachment of osteoclasts to the mineralized bone matrix. Secreted phosphoprotein 1 is secreted and binds hydroxyapatite with high affinity. The osteoclast vitronectin receptor is found in the cell membrane and may be involved in the binding to secreted phosphoprotein 1. Secreted phosphoprotein 1 is also a cytokine that upregulates expression of interferon-gamma and interleukin-12. Several transcript variants encoding different isoforms have been found for SPP1.

Recommended Dilution

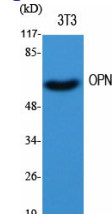
WB: 1: 500 - 1: 2000

IHC: 1: 100 - 1: 300

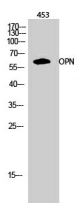
ELISA: 1: 20000

Not yet tested in other applications.

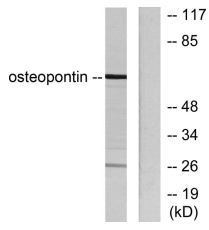
Images



Western Blot analysis of various cells using OPN Polyclonal Antibody diluted at 1:500



Western Blot analysis of 453 cells using OPN Polyclonal Antibody diluted at 1:500



Western blot analysis of lysates from LOVO cells, using Osteopontin Antibody. The lane on the right is blocked with the synthesized peptide.

Storage

-20°C for one year

501 Changsheng S Rd, Nanhu Dist, Jiaxing, Zhejiang, China

Tel: 86 21 31007137 | E-mail: save@bt-laboratory.com | www.bt-laboratory.com