

HDAC6(Phospho Ser22) Polyclonal Antibody

Description

Product type	Primary Antibody
Code	BT-AP06589
Host	Rabbit
Isotype	IgG
Size	100ul, 50ul, 20ul
Immunogen	The antiserum was produced against synthesized peptide derived from human HDAC6 around the phosphorylation site of Ser22. AA range:7-56
Mol wt	131431
Species reactivity	Human, Mouse
Clonality	Polyclonal
Recommended application	WB, IHC-p, IF, ICC, ELISA
Concentration	1 mg/ml
Full name	Histone deacetylase 6
Synonyms	Histone deacetylase 6; HDAC6; KIAA0901; JM21; Histone deacetylase 6; HD6

This product is for research use only, not for use in human, therapeutic or diagnostic procedure.

Background

Histones play a critical role in transcriptional regulation, cell cycle progression, and developmental events. Histone acetylation/deacetylation alters chromosome structure and affects transcription factor access to DNA. The protein encoded by this gene belongs to class II of the histone deacetylase/acuc/apha family. It contains an internal duplication of two catalytic domains which appear to function independently of each other. This protein possesses histone deacetylase activity and represses transcription.

Recommended Dilution

WB: 1: 500 - 1: 2000

IHC-p: 1: 100 - 1: 300

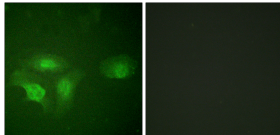
IF: 1: 200 - 1: 1000

ICC: 1: 200 - 1: 1000

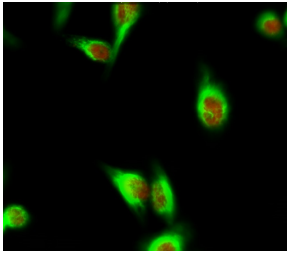
ELISA: 1: 10000

Not yet tested in other applications.

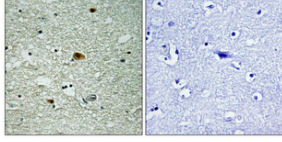
Images



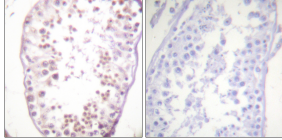
Immunofluorescence analysis of HeLa cell. HDAC6 (phospho Ser22) Polyclonal Antibody(Red) was diluted at 1:200(4°C overnight). Galectin-3 Monoclonal Antibody(6G2)(Green) was diluted at 1:200(4°C overnight).



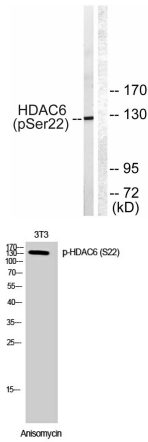
Immunofluorescence analysis of HepG2 cells, using HDAC6 (Phospho-Ser22) Antibody. The picture on the right is blocked with the phospho peptide.



Immunohistochemical analysis of paraffin-embedded Human brain. Antibody was diluted at 1:100(4°C overnight). High-pressure and temperature Tris-EDTA,pH8.0 was used for antigen retrieval. Negative contrl (right) obtained from antibody was pre-absorbed by immunogen peptide.



Immunohistochemistry analysis of paraffin-embedded human testis, using HDAC6 (Phospho-Ser22) Antibody. The picture on the right is blocked with the phospho peptide.



Western Blot analysis of 3T3 cells using Phospho-HDAC6 (S22) Polyclonal Antibody diluted at 1:500

Western blot analysis of lysates from NIH/3T3 cells treated with Anisomycin 25ug/ml 30', using HDAC6 (Phospho-Ser22) Antibody. The lane on the right is blocked with the phospho peptide.

Storage

-20°C for 1 year

501 Changsheng S Rd, Nanhu Dist, Jiaxing, Zhejiang, China

Tel: 86 21 31007137 | E-mail: save@bt-laboratory.com | www.bt-laboratory.com