

## AVP Receptor V2 Polyclonal Antibody

### Description

Product type	Primary Antibody
Code	BT-AP06611
Host	Rabbit
Isotype	IgG
Size	20ul, 50ul, 100ul
Immunogen	Synthesized peptide derived from human AVP Receptor V2. at AA range: 1-50
Mol wt	N/A
Species reactivity	Human, Mouse
Clonality	Polyclonal
Recommended application	WB, ELISA
Concentration	1 mg/ml
Full name	AVP Receptor V2
Synonyms	AVP Receptor V2; Vasopressin V2 receptor; V2R; AVPR V2; Antidiuretic hormone receptor; Renal-type arginine vasopressin receptor

This product is for research use only, not for use in human, therapeutic or diagnostic procedure.

### Background

This gene encodes the vasopressin receptor, type 2, also known as the V2 receptor, which belongs to the seven-transmembrane-domain G protein-coupled receptor (GPCR) superfamily, and couples to Gs thus stimulating adenylate cyclase. The subfamily that includes the V2 receptor, the V1a and V1b vasopressin receptors, the oxytocin receptor, and isotocin and mesotocin receptors in non-mammals, is well conserved, though several members signal via other G proteins. All bind similar cyclic nonapeptide hormones. The V2 receptor is expressed in the kidney tubule, predominantly in the distal convoluted tubule and collecting ducts, where its primary property is to respond to the pituitary hormone arginine vasopressin (AVP) by stimulating mechanisms that concentrate the urine and maintain water homeostasis in the organism. When the function of this gene is lost, the disease Nephrogenic Diabetes Insipidus

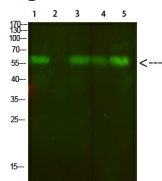
### Recommended Dilution

WB: 1: 500 - 1: 2000

ELISA: 1: 10000 - 1: 20000

Not yet tested in other applications.

### Images



Western Blot analysis of 1,mouse-lung 2,mouse-spleen 3,mouse-kidney 4,mouse-heart 5,293 cells using primary antibody diluted at 1:500(4°C overnight). Secondary antibody:Goat Anti-rabbit IgG IRDye 800( diluted at 1:5000, 25°C, 1 hour)

### Storage

-20°C for 1 year