

## AWAT2 Polyclonal Antibody

### Description

<b>Product type</b>	Primary Antibody
<b>Code</b>	BT-AP06617
<b>Host</b>	Rabbit
<b>Isotype</b>	IgG
<b>Size</b>	20ul, 50ul, 100ul
<b>Immunogen</b>	Synthesized peptide derived from human protein . at AA range: 260-340
<b>Mol wt</b>	N/A
<b>Species reactivity</b>	Human, Mouse
<b>Clonality</b>	Polyclonal
<b>Recommended application</b>	WB, ELISA
<b>Concentration</b>	1 mg/ml
<b>Full name</b>	Acyl-CoA wax alcohol acyltransferase 2
<b>Synonyms</b>	Acyl-CoA wax alcohol acyltransferase 2 ;EC 2.3.1.75;Acyl-CoA retinol O-fatty-acyltransferase;ARAT;Retinol O-fatty-acyltransferase;EC 2.3.1.76;Diacylglycerol O-acyltransferase 2-like protein

This product is for research use only, not for use in human, therapeutic or diagnostic procedure.

### Background

This gene encodes an enzyme belonging to the diacylglycerol acyltransferase family. This enzyme produces wax esters by the esterification of long chain (or wax) alcohols with acyl-CoA-derived fatty acids. It functions in lipid metabolism in the skin, mostly in undifferentiated peripheral sebocytes. This enzyme may also have acyl-CoA:retinol acyltransferase activities, where it catalyzes the synthesis of diacylglycerols and retinyl esters.

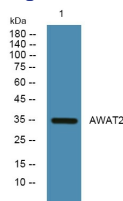
### Recommended Dilution

WB: 1: 500 - 1: 2000

ELISA: 1: 5000 - 1: 20000

Not yet tested in other applications.

### Images



Western blot analysis of lysates from U2OS cells, primary antibody was diluted at 1:1000, 4°C overnight

### Storage

-20°C for 1 year