

B3GT6 Polyclonal Antibody

Description

Product type	Primary Antibody
Code	BT-AP06638
Host	Rabbit
Isotype	IgG
Size	20ul, 50ul, 100ul
Immunogen	Synthesized peptide derived from human protein . at AA range: 50-130
Mol wt	N/A
Species reactivity	Human, Rat, Mouse
Clonality	Polyclonal
Recommended application	WB, ELISA
Concentration	1 mg/ml
Full name	Beta-1,3-galactosyltransferase 6
Synonyms	Beta-1,3-galactosyltransferase 6 ;Beta-1,3-GalTase 6;Beta3Gal-T6;Beta3GalT6;EC 2.4.1.134;GAG GalTII;Galactosyltransferase II;Galactosylxylosylprotein 3-beta-galactosyltransferase;UDP-Gal

This product is for research use only, not for use in human, therapeutic or diagnostic procedure.

Background

The enzyme encoded by this intronless gene is a beta-1,3-galactosyltransferase found in the medial Golgi apparatus, where it catalyzes the transfer of galactose from UDP-galactose to substrates containing a terminal beta-linked galactose moiety. The encoded enzyme has a particular affinity for galactose-beta-1,4-xylose found in the linker region of glycosamines. This enzyme is required for glycosaminoglycan synthesis.

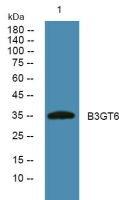
Recommended Dilution

WB: 1: 500 - 1: 2000

ELISA: 1: 5000 - 1: 20000

Not yet tested in other applications.

Images



Western blot analysis of lysates from A431 cells, primary antibody was diluted at 1:1000, 4°C overnight

Storage

-20°C for 1 year