

## Histone H3(Phospho Ser10) Polyclonal Antibody

### Description

<b>Product type</b>	Primary Antibody
<b>Code</b>	BT-AP06657
<b>Host</b>	Rabbit
<b>Isotype</b>	IgG
<b>Size</b>	100ul, 50ul, 20ul
<b>Immunogen</b>	The antiserum was produced against synthesized peptide derived from human Histone H3.1 around the phosphorylation site of Ser10. AA range:1-50
<b>Mol wt</b>	15273
<b>Species reactivity</b>	Human, Mouse, Rat
<b>Clonality</b>	Polyclonal
<b>Recommended application</b>	WB, IHC-p, IHC-f, Flow Cyt, ICC, IF, ICC, ELISA
<b>Concentration</b>	1 mg/ml
<b>Full name</b>	Histone H3.1
<b>Synonyms</b>	Histone H3.1; HIST1H3A; H3FA; HIST1H3B; H3FL; HIST1H3C; H3FC; HIST1H3D; H3FB; HIST1H3E; H3FD; HIST1H3F; H3FI; HIST1H3G; H3FH; HIST1H3H; H3FK; HIST1H3I; H3FF; HIST1H3J; H3FJ; Histone H3.1; Histone H3/a; Histone H3/b; Histone H3/c; Histone H3/d; Histone H3

**This product is for research use only, not for use in human, therapeutic or diagnostic procedure.**

### Background

Histones are basic nuclear proteins that are responsible for the nucleosome structure of the chromosomal fiber in eukaryotes. This structure consists of approximately 146 bp of DNA wrapped around a nucleosome, an octamer composed of pairs of each of the four core histones (H2A, H2B, H3, and H4). The chromatin fiber is further compacted through the interaction of a linker histone, H1, with the DNA between the nucleosomes to form higher order chromatin structures. This gene is intronless and encodes a replication-dependent histone that is a member of the histone H3 family. Transcripts from this gene lack polyA tails; instead, they contain a palindromic termination element. This gene is found in the large histone gene cluster on chromosome 6p22-p21.3.

### Recommended Dilution

WB: 1: 500 - 1: 2000

IHC-f: 1: 500

IHC: 1: 100 - 1: 300

IF: 1: 200 - 1: 1000

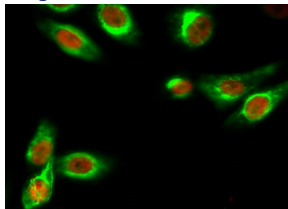
ICC: 1: 200 - 1: 1000

Flow Cyt: 1: 500

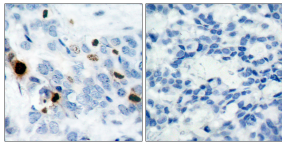
ELISA: 1: 10000

Not yet tested in other applications.

### Images

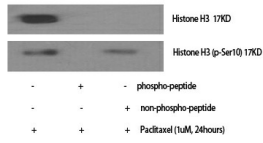


Immunofluorescence analysis of HeLa cell. Histone H3 (phospho Ser10) Polyclonal Antibody (Red) was diluted at 1:200(4°C overnight).  $\beta$ -Tubulin Monoclonal Antibody(5G3)(Green) was diluted at 1:200(4°C overnight).

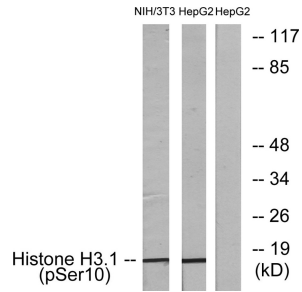


Immunohistochemistry analysis of paraffin-embedded human breast carcinoma, using Histone H3.1 (Phospho-Ser10) Antibody. The picture on the right is blocked with the phospho peptide.

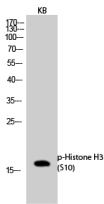
Western Blot analysis of various cells using Phospho-Histone H3 (S10) Polyclonal Antibody



Western Blot analysis of KB cells using Phospho-Histone H3 (S10) Polyclonal Antibody



Western blot analysis of lysates from NIH/3T3 cells and HepG2 cells, using Histone H3.1 (Phospho-Ser10) Antibody. The lane on the right is blocked with the phospho peptide.



### Storage

-20°C for 1 year

501 Changsheng S Rd, Nanhu Dist, Jiaxing, Zhejiang, China

Tel: 86 21 31007137 | E-mail: [save@bt-laboratory.com](mailto:save@bt-laboratory.com) | [www.bt-laboratory.com](http://www.bt-laboratory.com)