

## Bax Polyclonal Antibody

### Description

<b>Product type</b>	Primary Antibody
<b>Code</b>	BT-AP06693
<b>Host</b>	Rabbit
<b>Isotype</b>	IgG
<b>Size</b>	20ul, 50ul, 100ul
<b>Immunogen</b>	The antiserum was produced against synthesized peptide derived from human Bax. AA range:1-50
<b>Mol wt</b>	21184
<b>Species reactivity</b>	Human, Mouse, Rat
<b>Clonality</b>	Polyclonal
<b>Recommended application</b>	WB, IHC-p, IF, ELISA
<b>Concentration</b>	1 mg/ml
<b>Full name</b>	Apoptosis regulator BAX
<b>Synonyms</b>	Apoptosis regulator BAX; BAX; BCL2L4; Apoptosis regulator BAX; Bcl-2-like protein 4; Bcl2-L-4

**This product is for research use only, not for use in human, therapeutic or diagnostic procedure.**

### Background

The protein encoded by BAX (BCL2 associated X, apoptosis regulator) belongs to the BCL2 protein family. BCL2 family members form hetero- or homodimers and act as anti- or pro-apoptotic regulators that are involved in a wide variety of cellular activities. This protein forms a heterodimer with BCL2, and functions as an apoptotic activator. This protein is reported to interact with, and increase the opening of, the mitochondrial voltage-dependent anion channel (VDAC), which leads to the loss in membrane potential and the release of cytochrome c. The expression of this gene is regulated by the tumor suppressor P53 and has been shown to be involved in P53-mediated apoptosis. Multiple alternatively spliced transcript variants, which encode different isoforms, have been reported for BAX.

### Recommended Dilution

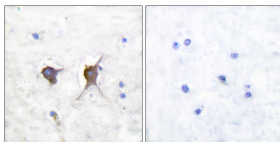
WB: 1: 500 - 1: 2000

IHC-p: 1: 100 - 1: 300

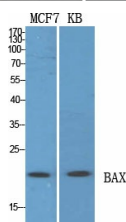
ELISA: 1: 10000

Not yet tested in other applications.

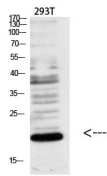
### Images



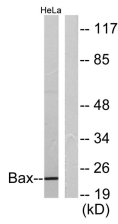
Immunohistochemistry analysis of paraffin-embedded human brain tissue, using Bax Antibody. The picture on the right is blocked with the synthesized peptide.



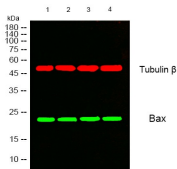
Western blot analysis of lysates from 1) HeLa, 2) MCF7, 3) k562, 4) A549 cells, (Green) primary antibody was diluted at 1:1000, 4°C overnight, secondary antibody was diluted at 1:10000, 37°C 1 hour. (Red) Tubulin  $\beta$  Monoclonal Antibody(5G3) was diluted at 1:5000 as loading control, 4°C overnight, secondary antibody was diluted at 1:10000, 37°C 1 hour.



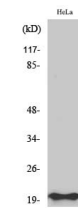
Western blot analysis of Bax Polyclonal Antibody, using HeLa, MCF7, k562, A549 cell, 4°C overnight, secondary antibody was diluted at 1:10000, 37°C 1 hour.



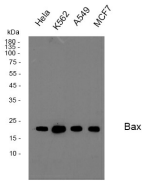
Western Blot analysis of various cells using Bax Polyclonal Antibody diluted at 1:2000



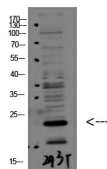
Western Blot analysis of HeLa cells using Bax Polyclonal Antibody diluted at 1:2000



Western Blot analysis of 293T using Bax Polyclonal Antibody diluted at 1:1000. Secondary antibody was diluted at 1:20000



Western blot analysis of various cell Lysate, antibody was diluted at 1:1000. Secondary antibody was diluted at 1:20000



Western blot analysis of lysates from HeLa cells, using Bax Antibody. The lane on the right is blocked with the synthesized peptide.

## Storage

-20°C for 1 year

501 Changsheng S Rd, Nanhu Dist, Jiaxing, Zhejiang, China

Tel: 86 21 31007137 | E-mail: [save@bt-laboratory.com](mailto:save@bt-laboratory.com) | [www.bt-laboratory.com](http://www.bt-laboratory.com)