

ORAOV1 Polyclonal Antibody

Description

Product type	Primary Antibody
Code	BT-AP06696
Host	Rabbit
Isotype	IgG
Size	20ul, 50ul, 100ul
Immunogen	The antiserum was produced against synthesized peptide derived from human ORAV1. AA range:81-130
Mol wt	15354
Species reactivity	Human
Clonality	Polyclonal
Recommended application	WB, IHC-p, IF, ELISA
Concentration	1 mg/ml
Full name	ORAOV1 Antibody
Synonyms	ORAOV1; TAOS1; Oral cancer-overexpressed protein 1; Tumor-amplified and overexpressed sequence 1

This product is for research use only, not for use in human, therapeutic or diagnostic procedure.

Background

SLC22A18 is one of several tumor-suppressing subtransferable fragments located in the imprinted gene domain of 11p15. , an important tumor-suppressor gene region. Alterations in this region have been associated with the Beckwith-Wiedemann syndrome, Wilms tumor, rhabdomyosarcoma, adrenocortical carcinoma, and lung, ovarian, and breast cancer. SLC22A18 is imprinted, with preferential expression from the maternal allele. Mutations in SLC22A18 have been found in Wilms' tumor and lung cancer. Solute carrier family 22 member 18 may act as a transporter of organic cations, and have a role in the transport of chloroquine and quinidine-related compounds in kidney. Several alternatively spliced transcript variants encoding different isoforms have been described.

Recommended Dilution

WB: 1: 500 - 1: 2000

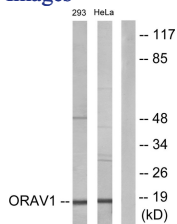
IHC: 1: 100 - 1: 300

IF: 1: 200 - 1: 1000

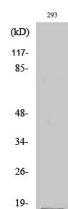
ELISA: 1: 10000

Not yet tested in other applications.

Images



Western blot analysis of lysates from 293 and HeLa cells, using ORAV1 Antibody. The lane on the right is blocked with the synthesized peptide.



Western Blot analysis of various cells using ORAOV1 Polyclonal Antibody diluted at 1:2000

Storage

-20°C for one year

501 Changsheng S Rd, Nanhu Dist, Jiaxing, Zhejiang, China

Tel: 86 21 31007137 | E-mail: save@bt-laboratory.com | www.bt-laboratory.com