

ORC1 Polyclonal Antibody

Description

Product type	Primary Antibody
Code	BT-AP06697
Host	Rabbit
Isotype	IgG
Size	20ul, 50ul, 100ul
Immunogen	The antiserum was produced against synthesized peptide derived from human ORC1L. AA range:331-380
Mol wt	97350
Species reactivity	Human
Clonality	Polyclonal
Recommended application	WB, ELISA
Concentration	1 mg/ml
Full name	ORC1 Antibody
Synonyms	ORC1; ORC1L; PARC1; Origin recognition complex subunit 1; Replication control protein 1

This product is for research use only, not for use in human, therapeutic or diagnostic procedure.

Background

ORC1 encodes one of several deubiquitylating enzymes. Ubiquitin modification of proteins is needed for their stability and function; to reverse the process, deubiquitylating enzymes remove ubiquitin. Origin recognition complex subunit 1 contains an OTU domain and binds Ubal (ubiquitin aldehyde); an active cysteine protease site is present in the OTU domain.

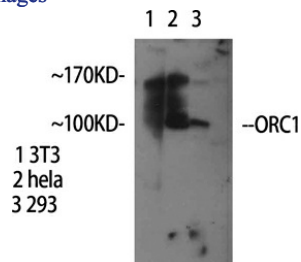
Recommended Dilution

WB: 1: 500 - 1: 2000

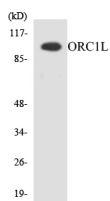
ELISA: 1: 5000

Not yet tested in other applications.

Images

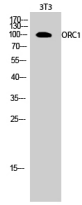


Western Blot analysis of various cells using ORC1 Polyclonal Antibody



Western blot analysis of the lysates from HepG2 cells using ORC1L antibody.

Western Blot analysis of 3T3 cells using ORC1 Polyclonal Antibody



Storage

-20°C for one year

501 Changsheng S Rd, Nanhu Dist, Jiaxing, Zhejiang, China

Tel: 86 21 31007137 | E-mail: save@bt-laboratory.com | www.bt-laboratory.com