

IL-8RA Polyclonal Antibody

Description

Product type	Primary Antibody
Code	BT-AP06702
Host	Rabbit
Isotype	IgG
Size	100ul, 50ul, 20ul
Immunogen	Synthetic peptide from human protein at AA range: 1-50
Mol wt	N/A
Species reactivity	Human, Rat, Mouse
Clonality	Polyclonal
Recommended application	WB, IHC-p, IF, ELISA
Concentration	1 mg/ml
Full name	C-X-C chemokine receptor type 1
Synonyms	C-X-C chemokine receptor type 1; CXC-R1;CXCR-1;CDw128a;High affinity interleukin-8 receptor A;IL-8R A;IL-8 receptor type 1;CD antigen CD181; C-X-C chemokine receptor type 1; CXC-R1; CXCR-1; CDw128a; High affinity interleukin-8 receptor A; IL-8R A; IL8RA; IL-8 receptor type 1; CD antigen CD181

This product is for research use only, not for use in human, therapeutic or diagnostic procedure.

Background

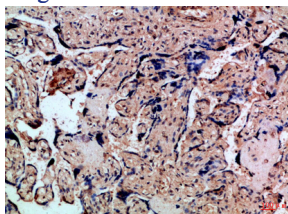
The protein encoded by this gene is a member of the G-protein-coupled receptor family. This protein is a receptor for interleukin 8 (IL8). It binds to IL8 with high affinity, and transduces the signal through a G-protein activated second messenger system. Knockout studies in mice suggested that this protein inhibits embryonic oligodendrocyte precursor migration in developing spinal cord. This gene, IL8RB, a gene encoding another high affinity IL8 receptor, as well as IL8RBP, a pseudogene of IL8RB, form a gene cluster in a region mapped to chromosome 2q33-q36.

Recommended Dilution

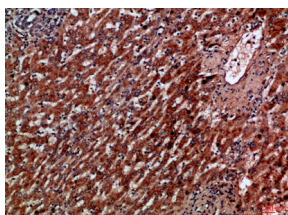
ELISA: 1: 10000 - 1: 20000

Not yet tested in other applications.

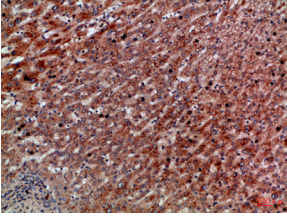
Images



Immunohistochemical analysis of paraffin-embedded Human-liver-cancer, antibody was diluted at 1:100



Immunohistochemical analysis of paraffin-embedded Human-liver-cancer, antibody was diluted at 1:100



Immunohistochemical analysis of paraffin-embedded Human-placenta, antibody was diluted at 1:100

Storage

-20°C for 1 year

501 Changsheng S Rd, Nanhu Dist, Jiaxing, Zhejiang, China

Tel: 86 21 31007137 | E-mail: save@bt-laboratory.com | www.bt-laboratory.com