

ORCTL2 Polyclonal Antibody

Description

Product type	Primary Antibody
Code	BT-AP06703
Host	Rabbit
Isotype	IgG
Size	20ul, 50ul, 100ul
Immunogen	The antiserum was produced against synthesized peptide derived from human ORCTL-2. AA range:359-408
Mol wt	43124
Species reactivity	Human
Clonality	Polyclonal
Recommended application	WB, IF, ELISA
Concentration	1 mg/ml
Full name	ORCTL2 Antibody
Synonyms	SLC22A18; BWR1A; BWSCR1A; HET; IMPT1; ITM; ORCTL2; SLC22A1L; TSSC5; Solute carrier family 22 member 18; Beckwith-Wiedemann syndrome chromosomal region 1 candidate gene A protein; Efflux transporter-li

This product is for research use only, not for use in human, therapeutic or diagnostic procedure.

Background

SLC22A18 is one of several tumor-suppressing subtransferable fragments located in the imprinted gene domain of 11p15. , an important tumor-suppressor gene region. Alterations in this region have been associated with the Beckwith-Wiedemann syndrome, Wilms tumor, rhabdomyosarcoma, adrenocortical carcinoma, and lung, ovarian, and breast cancer. SLC22A18 is imprinted, with preferential expression from the maternal allele. Mutations in SLC22A18 have been found in Wilms' tumor and lung cancer. Solute carrier family 22 member 18 may act as a transporter of organic cations, and have a role in the transport of chloroquine and quinidine-related compounds in kidney. Several alternatively spliced transcript variants encoding different isoforms have been described.

Recommended Dilution

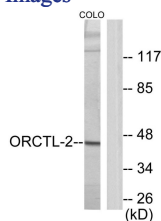
WB: 1: 500 - 1: 2000

IF: 1: 200 - 1: 1000

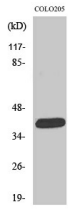
ELISA: 1: 10000

Not yet tested in other applications.

Images



Western blot analysis of lysates from COLO205 cells, using ORCTL-2 Antibody. The lane on the right is blocked with the synthesized peptide.



Western Blot analysis of various cells using ORCTL2 Polyclonal Antibody

Storage

-20°C for one year

501 Changsheng S Rd, Nanhu Dist, Jiaxing, Zhejiang, China

Tel: 86 21 31007137 | E-mail: save@bt-laboratory.com | www.bt-laboratory.com