

Orexin R-1 Polyclonal Antibody

Description

Product type	Primary Antibody
Code	BT-AP06706
Host	Rabbit
Isotype	IgG
Size	20ul, 50ul, 100ul
Immunogen	The antiserum was produced against synthesized peptide derived from human HCRTR1. AA range:231-280
Mol wt	47522
Species reactivity	Human, Mouse, Rat
Clonality	Polyclonal
Recommended application	WB, ELISA
Concentration	1 mg/ml
Full name	Orexin R-1 Antibody
Synonyms	HCRTR1; Orexin receptor type 1; Ox-1-R; Ox1-R; Ox1R; Hypocretin receptor type 1

This product is for research use only, not for use in human, therapeutic or diagnostic procedure.

Background

The hypocretin receptor 1 encoded by HCRTR1 is a G-protein coupled receptor involved in the regulation of feeding behavior. The encoded protein selectively binds the hypothalamic neuropeptide orexin A. A related gene (HCRTR2) encodes a G-protein coupled receptor that binds orexin A and orexin B.

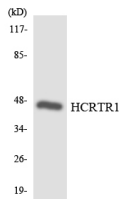
Recommended Dilution

WB: 1: 500 - 1: 2000

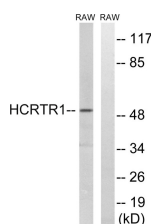
ELISA: 1: 5000

Not yet tested in other applications.

Images



Western blot analysis of the lysates from HepG2 cells using HCRTR1 antibody.



Western blot analysis of lysates from RAW264.7 cells, using HCRTR1 Antibody. The lane on the right is blocked with the synthesized peptide.

Storage

-20°C for one year

