

Integrin beta 1(Phospho Thr788) Polyclonal Antibody

Description

Product type	Primary Antibody
Code	BT-AP06710
Host	Rabbit
Isotype	IgG
Size	100ul, 50ul, 20ul
Immunogen	The antiserum was produced against synthesized peptide derived from human Integrin beta1 around the phosphorylation site of Thr788. AA range:749-798
Mol wt	88465
Species reactivity	Human, Mouse, Rat
Clonality	Polyclonal
Recommended application	WB, IHC-p, IF, ELISA
Concentration	1 mg/ml
Full name	Integrin beta-1
Synonyms	Integrin beta-1; ITGB1; FNRB; MDF2; MSK12; Integrin beta-1; Fibronectin receptor subunit beta; VLA-4 subunit beta; CD antigen CD29

This product is for research use only, not for use in human, therapeutic or diagnostic procedure.

Background

Integrins are heterodimeric proteins made up of alpha and beta subunits. At least 18 alpha and 8 beta subunits have been described in mammals. Integrin family members are membrane receptors involved in cell adhesion and recognition in a variety of processes including embryogenesis, hemostasis, tissue repair, immune response and metastatic diffusion of tumor cells. This gene encodes a beta subunit. Multiple alternatively spliced transcript variants which encode different protein isoforms have been found for this gene.

Recommended Dilution

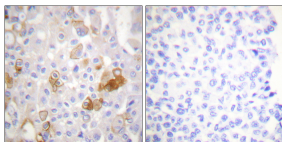
WB: 1: 500 - 1: 2000

IHC-p: 1: 100 - 1: 300

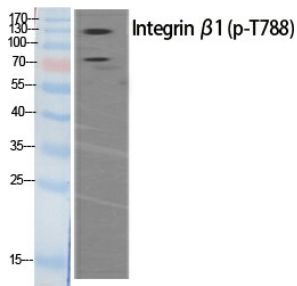
ELISA: 1: 20000

Not yet tested in other applications.

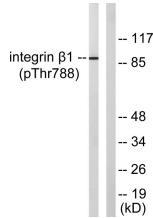
Images



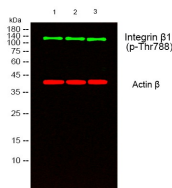
Immunohistochemistry analysis of paraffin-embedded human breast carcinoma, using Integrin beta1 (Phospho-Thr788) Antibody. The picture on the right is blocked with the phospho peptide.



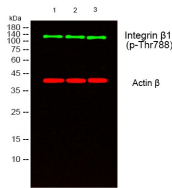
Western blot analysis of lysates from 1) HeLa , 2)3T3, 3) Jurkat cells, (Green) primary antibody was diluted at 1:1000, 4°C overnight, secondary antibody was diluted at 1:10000, 37°C 1hour. (Red) Actin β Monoclonal Antibody(5B7) was diluted at 1:5000 as loading control, 4°C overnight,secondary antibody was diluted at 1:10000, 37°C 1hour.



Western Blot analysis of various cells using Phospho-Integrin β 1 (T788) Polyclonal Antibody



Western blot analysis of lysates from HeLa cells treated with UV 15', using Integrin beta1 (Phospho-Thr788) Antibody. The lane on the right is blocked with the phospho peptide.



Western blot analysis of lysates from 1) HeLa , 2)3T3, 3) Jurkat cells, (Green) primary antibody was diluted at 1:1000, 4°C overnight, secondary antibody was diluted at 1:10000, 37°C 1hour. (Red) Actin β Monoclonal Antibody(5B7) antibody was diluted at 1:5000 as loading control, 4°C overnight,secondary antibody was diluted at 1:10000, 37°C 1hour.

Storage

-20°C for 1 year

501 Changsheng S Rd, Nanhu Dist, Jiaxing, Zhejiang, China

Tel: 86 21 31007137 | E-mail: save@bt-laboratory.com | www.bt-laboratory.com