

OSR2 Polyclonal Antibody

Description

Product type	Primary Antibody
Code	BT-AP06712
Host	Rabbit
Isotype	IgG
Size	20ul, 50ul, 100ul
Immunogen	Synthesized peptide derived from OSR2 . at AA range: 60-140
Mol wt	35513
Species reactivity	Human, Mouse, Rat
Clonality	Polyclonal
Recommended application	WB, ELISA
Concentration	1 mg/ml
Full name	OSR2 Antibody
Synonyms	OSR2; Protein odd-skipped-related 2

This product is for research use only, not for use in human, therapeutic or diagnostic procedure.

Background

OSR2 is a mammalian homolog of the Drosophila odd-skipped family of transcription factors (Lan et al. 2004 [PubMed 15175245]).

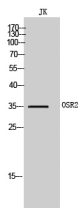
Recommended Dilution

WB: 1: 500 - 1: 2000

ELISA: 1: 40000

Not yet tested in other applications.

Images



Western Blot analysis of JK cells using OSR2 Polyclonal Antibody cells nucleus.

Storage

-20°C for one year

501 Changsheng S Rd, Nanhu Dist, Jiaxing, Zhejiang, China

Tel: 86 21 31007137 | E-mail: save@bt-laboratory.com | www.bt-laboratory.com