

p107 Polyclonal Antibody

Description

Product type	Primary Antibody
Code	BT-AP06734
Host	Rabbit
Isotype	IgG
Size	20ul, 50ul, 100ul
Immunogen	The antiserum was produced against synthesized peptide derived from human RBL1. AA range:335-384
Mol wt	120847
Species reactivity	Human, Mouse
Clonality	Polyclonal
Recommended application	IF, ELISA
Concentration	1 mg/ml
Full name	p107 Antibody
Synonyms	RBL1; Retinoblastoma-like protein 1; 107 kDa retinoblastoma-associated protein; p107; pRb1

This product is for research use only, not for use in human, therapeutic or diagnostic procedure.

Background

The protein encoded by RBL1 (RB transcriptional corepressor like 1) is similar in sequence and possibly function to the product of the retinoblastoma 1 (RB1) gene. The RB1 gene product is a tumor suppressor protein that appears to be involved in cell cycle regulation, as it is phosphorylated in the S to M phase transition and is dephosphorylated in the G1 phase of the cell cycle. Both the RB1 protein and the product of this gene can form a complex with adenovirus E1A protein and SV40 large T-antigen, with the SV40 large T-antigen binding only to the unphosphorylated form of each protein. In addition, both proteins can inhibit the transcription of cell cycle genes containing E2F binding sites in their promoters. Due to the sequence and biochemical similarities with the RB1 protein, it is thought that the protein encoded by this gene may also be a tumor suppressor. Two transcript variants encoding different isoforms have been found for RBL1.

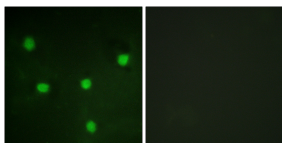
Recommended Dilution

IF: 1: 200 - 1: 1000

ELISA: 1: 5000

Not yet tested in other applications.

Images



Immunofluorescence analysis of NIH/3T3 cells, using RBL1 Antibody. The picture on the right is blocked with the synthesized peptide.

Storage

-20°C for one year