

p140Cap Polyclonal Antibody

Description

| | |
|--------------------------------|--|
| Product type | Primary Antibody |
| Code | BT-AP06742 |
| Host | Rabbit |
| Isotype | IgG |
| Size | 20ul, 50ul, 100ul |
| Immunogen | The antiserum was produced against synthesized peptide derived from human SNIP. AA range:811-860 |
| Mol wt | 112466 |
| Species reactivity | Human, Mouse, Rat |
| Clonality | Polyclonal |
| Recommended application | WB, ELISA |
| Concentration | 1 mg/ml |
| Full name | p140Cap Antibody |
| Synonyms | SRCIN1; KIAA1684; P140; SRC kinase signaling inhibitor 1; SNAP-25-interacting protein; SNIP; p130Cas-associated protein; p140Cap |

This product is for research use only, not for use in human, therapeutic or diagnostic procedure.

Background

SRCIN1 (SRC Kinase Signaling Inhibitor 1) is a Protein Coding gene. Diseases associated with SRCIN1 include sclerosing keratitis and loiasis. Gene Ontology (GO) annotations related to SRCIN1 include protein kinase binding and protein domain specific binding. An important paralog of SRCIN1 is KIAA1217.

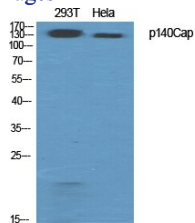
Recommended Dilution

WB: 1: 500 - 1: 2000

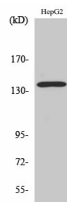
ELISA: 1: 20000

Not yet tested in other applications.

Images



Western Blot analysis of various cells using p140Cap Polyclonal Antibody diluted at 1:500



Western Blot analysis of HeLa cells using p140Cap Polyclonal Antibody diluted at 1:500

Storage

-20°C for one year

501 Changsheng S Rd, Nanhu Dist, Jiaxing, Zhejiang, China

Tel: 86 21 31007137 | E-mail: save@bt-laboratory.com | www.bt-laboratory.com