

p164-RhoGEF Polyclonal Antibody

Description

Product type	Primary Antibody
Code	BT-AP06746
Host	Rabbit
Isotype	IgG
Size	20ul, 50ul, 100ul
Immunogen	The antiserum was produced against synthesized peptide derived from human ARHGEF17. AA range:431-480
Mol wt	221673
Species reactivity	Human, Mouse
Clonality	Polyclonal
Recommended application	IHC-p, IF, ELISA
Concentration	1 mg/ml
Full name	p164-RhoGEF Antibody
Synonyms	ARHGEF17; KIAA0337; TEM4; Rho guanine nucleotide exchange factor 17; 164 kDa Rho-specific guanine-nucleotide exchange factor; p164-RhoGEF; p164RhoGEF; Tumor endothelial marker 4

This product is for research use only, not for use in human, therapeutic or diagnostic procedure.

Background

ARHGEF17, also named as KIAA0337, TEM4 and p164RhoGEF, acts as guanine nucleotide exchange factor (GEF) for RhoA GTPases. The antibody recognizes the C-term of ARHGEF17.

Recommended Dilution

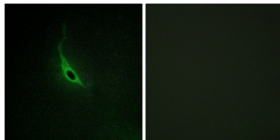
IHC: 1: 100 - 1: 300

IF: 1: 200 - 1: 1000

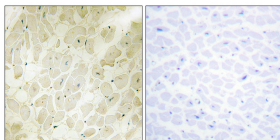
ELISA: 1: 5000

Not yet tested in other applications.

Images



Immunofluorescence analysis of HepG2 cells, using CARD6 Antibody diluted at 1:50. The picture on the right is blocked with the synthesized peptide.



Immunohistochemical analysis of paraffin-human heart. 1, Antibody was diluted at 1:200(4° overnight). 2, TRIS-EDTA of pH8.0 was used for antigen retrieval. 3,Secondary antibody was diluted at 1:200(room temperature, 30min). The picture on the right is blocked with the synthesized peptide.

Storage

-20°C for one year