

p23 Polyclonal Antibody

Description

| | |
|--------------------------------|--|
| Product type | Primary Antibody |
| Code | BT-AP06752 |
| Host | Rabbit |
| Isotype | IgG |
| Size | 20ul, 50ul, 100ul |
| Immunogen | The antiserum was produced against synthesized peptide derived from human TEBP. AA range:79-128 |
| Mol wt | 18697 |
| Species reactivity | Human, Mouse, Rat |
| Clonality | Polyclonal |
| Recommended application | WB, IHC-p, ELISA |
| Concentration | 1 mg/ml |
| Full name | p23 Antibody |
| Synonyms | PTGES3; P23; TEBP; Prostaglandin E synthase 3; Cytosolic prostaglandin E2 synthase; cPGES; Hsp90 co-chaperone; Progesterone receptor complex p23; Telomerase-binding protein p23 |

This product is for research use only, not for use in human, therapeutic or diagnostic procedure.

Background

Cyclin dependent kinase inhibitor 1A mediates the p53-dependent cell cycle G1 phase arrest in response to a variety of stress stimuli. Cyclin dependent kinase inhibitor 1A can interact with proliferating cell nuclear antigen, a DNA polymerase accessory factor, and plays a regulatory role in S phase DNA replication and DNA damage repair.

Recommended Dilution

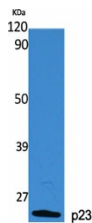
WB: 1: 500 - 1: 2000

IHC: 1: 100 - 1: 300

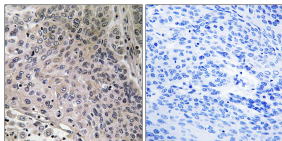
ELISA: 1: 10000

Not yet tested in other applications.

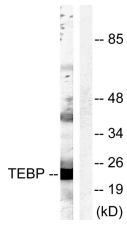
Images



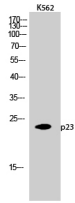
Western Blot analysis of various cells using p23 Polyclonal Antibody diluted at 1:2000



Immunohistochemistry analysis of paraffin-embedded human breast carcinoma tissue, using TEBP Antibody. The picture on the right is blocked with the synthesized peptide.



Western blot analysis of lysates from NIH/3T3 cells, treated with EGF 200ng/ml 30', using TEBP Antibody. The lane on the right is blocked with the synthesized peptide.



Western Blot analysis of K562 cells using p23 Polyclonal Antibody diluted at 1:2000

Storage

-20°C for one year

501 Changsheng S Rd, Nanhu Dist, Jiaxing, Zhejiang, China

Tel: 86 21 31007137 | E-mail: save@bt-laboratory.com | www.bt-laboratory.com