

p27 Polyclonal Antibody

Description

Product type	Primary Antibody
Code	BT-AP06756
Host	Rabbit
Isotype	IgG
Size	20ul, 50ul, 100ul
Immunogen	The antiserum was produced against synthesized peptide derived from human p27 Kip1. AA range:149-198
Mol wt	22073
Species reactivity	Human
Clonality	Polyclonal
Recommended application	WB, IHC-p, ELISA
Concentration	1 mg/ml
Full name	p27 Antibody
Synonyms	CDKN1B; KIP1; Cyclin-dependent kinase inhibitor 1B; Cyclin-dependent kinase inhibitor p27; p27Kip1

This product is for research use only, not for use in human, therapeutic or diagnostic procedure.

Background

CDKN1B encodes a cyclin-dependent kinase inhibitor, which shares a limited similarity with CDK inhibitor CDKN1A/p21. The cyclin dependent kinase inhibitor 1B binds to and prevents the activation of cyclin E-CDK2 or cyclin D-CDK4 complexes, and thus controls the cell cycle progression at G1. The degradation of this protein, which is triggered by its CDK dependent phosphorylation and subsequent ubiquitination by SCF complexes, is required for the cellular transition from quiescence to the proliferative state. Mutations in this gene are associated with multiple endocrine neoplasia type IV (MEN7).

Recommended Dilution

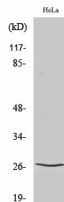
WB: 1: 500 - 2000

IHC: 1: 50 - 300

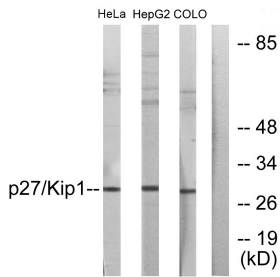
ELISA: 1: 10000 - 20000

Not yet tested in other applications.

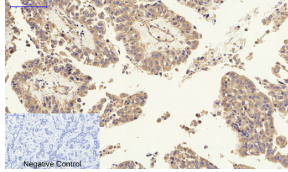
Images



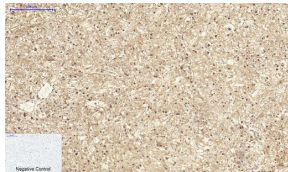
Western Blot analysis of COLO205 cells using p27 Polyclonal Antibody diluted at 1:500



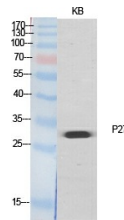
Western blot analysis of lysates from HeLa, HepG2, and COLO205 cells, using p27 Kip1 Antibody. The lane on the right is blocked with the synthesized peptide.



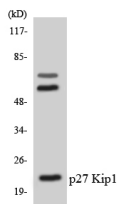
Immunohistochemical analysis of paraffin-embedded Human-liver-cancer tissue. 1,p27 Polyclonal Antibody was diluted at 1:200(4°C,overnight). 2, Sodium citrate pH 6.0 was used for antibody retrieval(>98°C,20min). 3,Secondary antibody was diluted at 1:200(room tempeRature, 30min). Negative control was used by secondary antibody only.



Immunohistochemical analysis of paraffin-embedded Human-kidney-cancer tissue. 1,p27 Polyclonal Antibody was diluted at 1:200(4°C,overnight). 2, Sodium citrate pH 6.0 was used for antibody retrieval(>98°C,20min). 3,Secondary antibody was diluted at 1:200(room tempeRature, 30min). Negative control was used by secondary antibody only.



Western Blot analysis of various cells using p27 Polyclonal Antibody diluted at 1:500



Western blot analysis of the lysates from Jurkat cells using p27 Kip1 antibody.

Storage

-20°C for one year

501 Changsheng S Rd, Nanhu Dist, Jiaxing, Zhejiang, China

Tel: 86 21 31007137 | E-mail: save@bt-laboratory.com | www.bt-laboratory.com