

## P2RY13 Polyclonal Antibody

### Description

<b>Product type</b>	Primary Antibody
<b>Code</b>	BT-AP06762
<b>Host</b>	Rabbit
<b>Isotype</b>	IgG
<b>Size</b>	20ul, 50ul, 100ul
<b>Immunogen</b>	The antiserum was produced against synthesized peptide derived from human P2RY13. AA range:209-258
<b>Mol wt</b>	38440
<b>Species reactivity</b>	Human, Rat
<b>Clonality</b>	Polyclonal
<b>Recommended application</b>	WB, IHC-p, IF, ELISA
<b>Concentration</b>	1 mg/ml
<b>Full name</b>	P2RY13 Antibody
<b>Synonyms</b>	P2RY13; GPR86; GPR94; FKSG77; P2Y purinoceptor 13; P2Y13; G-protein coupled receptor 86; G-protein coupled receptor 94

This product is for research use only, not for use in human, therapeutic or diagnostic procedure.

### Background

The product of P2RY13 (purinergic receptor P2Y13) belongs to the family of G-protein coupled receptors. This family has several receptor subtypes with different pharmacological selectivity, which overlaps in some cases, for various adenosine and uridine nucleotides. This receptor is activated by ADP.

### Recommended Dilution

WB: 1: 500 - 1: 2000

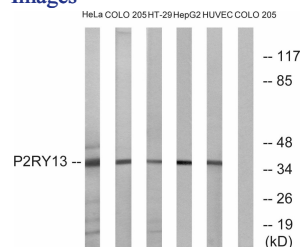
IHC: 1: 100 - 1: 300

IF: 1: 200 - 1: 1000

ELISA: 1: 20000

Not yet tested in other applications.

### Images



### Storage

-20°C for one year