

P2RY8 Polyclonal Antibody

Description

Product type	Primary Antibody
Code	BT-AP06765
Host	Rabbit
Isotype	IgG
Size	20ul, 50ul, 100ul
Immunogen	The antiserum was produced against synthesized peptide derived from human P2RY8. AA range:192-241
Mol wt	40635
Species reactivity	Human
Clonality	Polyclonal
Recommended application	WB, IF, ELISA
Concentration	1 mg/ml
Full name	P2RY8 Antibody
Synonyms	P2RY8; P2Y purinoceptor 8; P2Y8

This product is for research use only, not for use in human, therapeutic or diagnostic procedure.

Background

Purinergic receptor P2Y8 encoded by P2RY8 belongs to the family of G-protein coupled receptors, that are preferentially activated by adenosine and uridine nucleotides. P2RY8 is moderately expressed in undifferentiated HL60 cells, and is located on both chromosomes X and Y.

Recommended Dilution

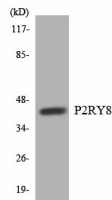
WB: 1: 500 - 1: 2000

IF: 1: 200 - 1: 1000

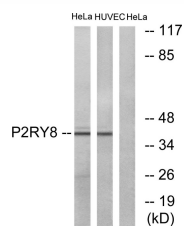
ELISA: 1: 20000

Not yet tested in other applications.

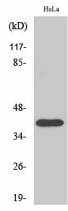
Images



Western blot analysis of the lysates from COLO205 cells using P2RY8 antibody.



Western blot analysis of lysates from HeLa and HUVEC cells, using P2RY8 Antibody. The lane on the right is blocked with the synthesized peptide.



Western Blot analysis of various cells using P2RY8 Polyclonal Antibody diluted at 1:2000

Storage

-20°C for one year

501 Changsheng S Rd, Nanhu Dist, Jiaxing, Zhejiang, China

Tel: 86 21 31007137 | E-mail: save@bt-laboratory.com | www.bt-laboratory.com