

## P2X3 Polyclonal Antibody

### Description

<b>Product type</b>	Primary Antibody
<b>Code</b>	BT-AP06766
<b>Host</b>	Rabbit
<b>Isotype</b>	IgG
<b>Size</b>	20ul, 50ul, 100ul
<b>Immunogen</b>	The antiserum was produced against synthesized peptide derived from the Internal region of human P2RX3. AA range:81-130
<b>Mol wt</b>	44230
<b>Species reactivity</b>	Human, Mouse, Rat
<b>Clonality</b>	Polyclonal
<b>Recommended application</b>	WB, IHC-p, ELISA
<b>Concentration</b>	1 mg/ml
<b>Full name</b>	P2X3 Antibody
<b>Synonyms</b>	P2RX3; P2X purinoceptor 3; P2X3; ATP receptor; Purinergic receptor

**This product is for research use only, not for use in human, therapeutic or diagnostic procedure.**

### Background

The product of P2RX3 belongs to the family of purinoceptors for ATP. This receptor functions as a ligand-gated ion channel and may transduce ATP-evoked nociceptor activation. Mouse studies suggest that this receptor is important for peripheral pain responses, and also participates in pathways controlling urinary bladder volume reflexes. It is possible that the development of selective antagonists for this receptor may have a therapeutic potential in pain relief and in the treatment of disorders of urine storage.

### Recommended Dilution

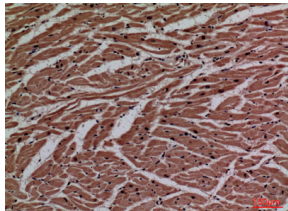
WB: 1: 500 - 1: 2000

IHC-p: 1: 100 - 300

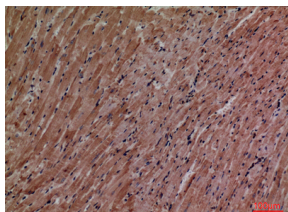
ELISA: 1: 20000

Not yet tested in other applications.

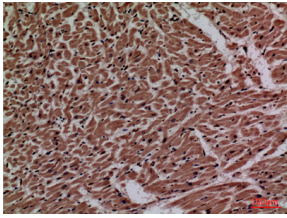
### Images



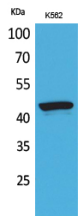
Immunohistochemical analysis of paraffin-embedded human-heart, antibody was diluted at 1:100



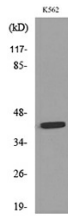
Immunohistochemical analysis of paraffin-embedded mouse-heart, antibody was diluted at 1:100



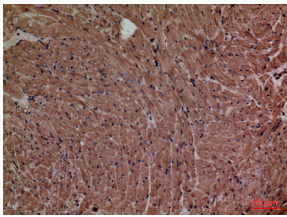
Immunohistochemical analysis of paraffin-embedded human-heart, antibody was diluted at 1:100



Western Blot analysis of K562 cells using P2X3 Polyclonal Antibody. Secondary antibody was diluted at 1:20000



Western blot analysis of lysate from K562 cells, using P2RX3 Antibody.



Immunohistochemical analysis of paraffin-embedded mouse-heart, antibody was diluted at 1:100

### Storage

-20°C for one year

501 Changsheng S Rd, Nanhu Dist, Jiaxing, Zhejiang, China

Tel: 86 21 31007137 | E-mail: [save@bt-laboratory.com](mailto:save@bt-laboratory.com) | [www.bt-laboratory.com](http://www.bt-laboratory.com)