

P2Y11 Polyclonal Antibody

Description

Product type	Primary Antibody
Code	BT-AP06768
Host	Rabbit
Isotype	IgG
Size	20ul, 50ul, 100ul
Immunogen	The antiserum was produced against synthesized peptide derived from human P2RY11. AA range:140-189
Mol wt	40345
Species reactivity	Human
Clonality	Polyclonal
Recommended application	WB, ELISA
Concentration	1 mg/ml
Full name	P2Y11 Antibody
Synonyms	P2RY11; P2Y purinoceptor 11; P2Y11

This product is for research use only, not for use in human, therapeutic or diagnostic procedure.

Background

The product of P2RY11 belongs to the family of G-protein coupled receptors. This family has several receptor subtypes with different pharmacological selectivity, which overlaps in some cases, for various adenosine and uridine nucleotides. This receptor is coupled to the stimulation of the phosphoinositide and adenylyl cyclase pathways and behaves as a selective purinoceptor. Naturally occurring read-through transcripts, resulting from intergenic splicing between P2RY11 and an immediately upstream gene (PPAN, encoding peter pan homolog), have been found. The PPAN-P2RY11 read-through mRNA is ubiquitously expressed and encodes a fusion protein that shares identity with each individual gene product

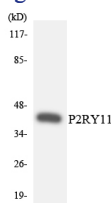
Recommended Dilution

WB: 1: 500 - 1: 2000

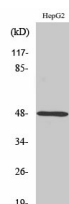
ELISA: 1: 10000

Not yet tested in other applications.

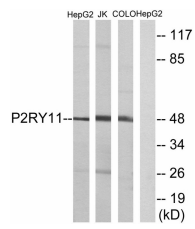
Images



Western blot analysis of the lysates from K562 cells using P2RY11 antibody.



Western Blot analysis of various cells using P2Y11 Polyclonal Antibody



Western blot analysis of lysates from HepG2, Jurkat, and COLO cells, using P2RY11 Antibody. The lane on the right is blocked with the synthesized peptide.

Storage

-20°C for one year

501 Changsheng S Rd, Nanhu Dist, Jiaxing, Zhejiang, China

Tel: 86 21 31007137 | E-mail: save@bt-laboratory.com | www.bt-laboratory.com