

## P2Y4 Polyclonal Antibody

### Description

|                                |   |
|--------------------------------|---|
| <b>Product type</b>            | Primary Antibody  |
| <b>Code</b>                    | BT-AP06770  |
| <b>Host</b>                    | Rabbit  |
| <b>Isotype</b>                 | IgG   |
| <b>Size</b>                    | 20ul, 50ul, 100ul   |
| <b>Immunogen</b>               | The antiserum was produced against synthesized peptide derived from human P2RY4. AA range:159-208 |
| <b>Mol wt</b>                  | 40963   |
| <b>Species reactivity</b>      | Human, Mouse, Rat   |
| <b>Clonality</b>               | Polyclonal  |
| <b>Recommended application</b> | WB, IF, ELISA   |
| <b>Concentration</b>           | 1 mg/ml   |
| <b>Full name</b>               | P2Y4 Antibody   |
| <b>Synonyms</b>                | P2RY4; NRU; P2Y purinoceptor 4; P2Y4; P2P; Uridine nucleotide receptor; UNR                       |

**This product is for research use only, not for use in human, therapeutic or diagnostic procedure.**

### Background

The product of P2RY4 belongs to the family of G-protein coupled receptors. This family has several receptor subtypes with different pharmacological selectivity, which overlaps in some cases, for various adenosine and uridine nucleotides. This receptor is responsive to uridine nucleotides, partially responsive to ATP, and not responsive to ADP.

### Recommended Dilution

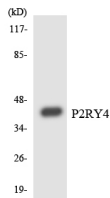
WB: 1: 500 - 1: 2000

IF: 1: 200 - 1: 1000

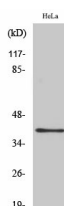
ELISA: 1: 10000

Not yet tested in other applications.

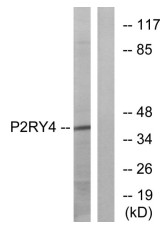
### Images



Western blot analysis of the lysates from COLO205 cells using P2RY4 antibody.



Western Blot analysis of various cells using P2Y4 Polyclonal Antibody diluted at 1:500



Western blot analysis of lysates from HeLa cells, using P2RY4 Antibody. The lane on the right is blocked with the synthesized peptide.

### Storage

-20°C for one year

501 Changsheng S Rd, Nanhu Dist, Jiaxing, Zhejiang, China

Tel: 86 21 31007137 | E-mail: [save@bt-laboratory.com](mailto:save@bt-laboratory.com) | [www.bt-laboratory.com](http://www.bt-laboratory.com)