

p300 Polyclonal Antibody

Description

Product type	Primary Antibody
Code	BT-AP06775
Host	Rabbit
Isotype	IgG
Size	20ul, 50ul, 100ul
Immunogen	The antiserum was produced against synthesized peptide derived from human p300. AA range: 1-50
Mol wt	264144
Species reactivity	Human
Clonality	Polyclonal
Recommended application	WB, IHC-p, ELISA
Concentration	1 mg/ml
Full name	p300 Antibody
Synonyms	EP300; P300; Histone acetyltransferase p300; p300 HAT; E1A-associated protein p300

This product is for research use only, not for use in human, therapeutic or diagnostic procedure.

Background

EP300 encodes the adenovirus E1A-associated cellular p300 transcriptional co-activator protein. It functions as histone acetyltransferase that regulates transcription via chromatin remodeling and is important in the processes of cell proliferation and differentiation. It mediates cAMP-gene regulation by binding specifically to phosphorylated CREB protein. EP300 has also been identified as a co-activator of HIF1A (hypoxia-inducible factor 1 alpha), and thus plays a role in the stimulation of hypoxia-induced genes such as VEGF. Defects in EP300 are a cause of Rubinstein-Taybi syndrome and may also play a role in epithelial cancer.

Recommended Dilution

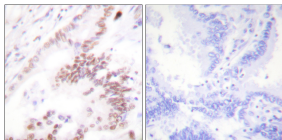
WB: 1: 500 - 1: 2000

IHC: 1: 100 - 1: 300

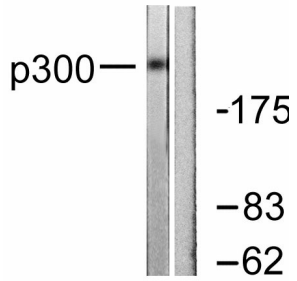
ELISA: 1: 10000

Not yet tested in other applications.

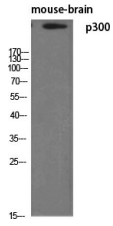
Images



Immunohistochemistry analysis of paraffin-embedded human lung carcinoma tissue, using p300 Antibody. The picture on the right is blocked with the synthesized peptide.



Western blot analysis of lysates from MDA-MB-435 cells, using p300 Antibody. The lane on the right is blocked with the synthesized peptide.



Western Blot analysis of various cells using p300 Polyclonal Antibody diluted at 1:500

Storage

-20°C for one year

501 Changsheng S Rd, Nanhu Dist, Jiaxing, Zhejiang, China

Tel: 86 21 31007137 | E-mail: save@bt-laboratory.com | www.bt-laboratory.com