

IRS-1(phospho Ser639) Polyclonal Antibody

Description

| | |
|--------------------------------|---|
| Product type | Primary Antibody |
| Code | BT-AP06779 |
| Host | Rabbit |
| Isotype | IgG |
| Size | 100ul, 50ul, 20ul |
| Immunogen | The antiserum was produced against synthesized peptide derived from human IRS-1 around the phosphorylation site of Ser639. AA range:605-654 |
| Mol wt | 131591 |
| Species reactivity | Human, Mouse, Rat |
| Clonality | Polyclonal |
| Recommended application | WB, IHC-p, IF, ELISA |
| Concentration | 1 mg/ml |
| Full name | Insulin receptor substrate 1 |
| Synonyms | Insulin receptor substrate 1; IRS1; Insulin receptor substrate 1; IRS-1 |

This product is for research use only, not for use in human, therapeutic or diagnostic procedure.

Background

This gene encodes a protein which is phosphorylated by insulin receptor tyrosine kinase. Mutations in this gene are associated with type II diabetes and susceptibility to insulin resistance.

Recommended Dilution

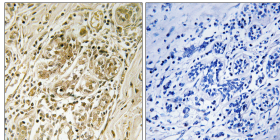
WB: 1: 500 - 1: 2000

IHC-p: 1: 100 - 1: 300

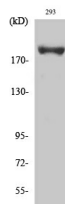
ELISA: 1: 20000

Not yet tested in other applications.

Images



Immunohistochemistry analysis of paraffin-embedded human breast carcinoma, using IRS-1 (Phospho-Ser639) Antibody. The picture on the right is blocked with the phospho peptide.



Western Blot analysis of various cells using Phospho-IRS-1 (S639) Polyclonal Antibody diluted at 1:500

Storage

-20°C for 1 year