

## p39 Polyclonal Antibody

### Description

<b>Product type</b>	Primary Antibody
<b>Code</b>	BT-AP06785
<b>Host</b>	Rabbit
<b>Isotype</b>	IgG
<b>Size</b>	20ul, 50ul, 100ul
<b>Immunogen</b>	The antiserum was produced against synthesized peptide derived from human CDK5R2. AA range:81-130
<b>Mol wt</b>	38705
<b>Species reactivity</b>	Human
<b>Clonality</b>	Polyclonal
<b>Recommended application</b>	WB, IHC-p, ELISA
<b>Concentration</b>	1 mg/ml
<b>Full name</b>	p39 Antibody
<b>Synonyms</b>	CDK5R2; NCK5AI; Cyclin-dependent kinase 5 activator 2; CDK5 activator 2; Cyclin-dependent kinase 5 regulatory subunit 2; p39; p39I

**This product is for research use only, not for use in human, therapeutic or diagnostic procedure.**

### Background

Cyclin dependent kinase 5 regulatory subunit 2 encoded by CDK5R2 is a neuron-specific activator of CDK5 kinase. It associates with CDK5 to form an active kinase. Cyclin dependent kinase 5 regulatory subunit 2 and neuron-specific CDK5 activator CDK5R1/p39NCK5A both share limited similarity to cyclins, and thus may define a distinct family of cyclin-dependent kinase activating proteins.

### Recommended Dilution

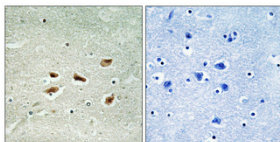
WB: 1: 500 - 1: 2000

IHC: 1: 100 - 1: 300

ELISA: 1: 20000

Not yet tested in other applications.

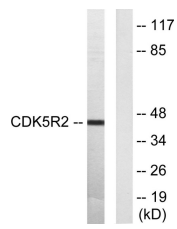
### Images



Immunohistochemical analysis of paraffin-embedded Human brain. Antibody was diluted at 1:100(4° overnight). High-pressure and temperature Tris-EDTA,pH8.0 was used for antigen retrieval. Negative contrl (right) obtaned from antibody was pre-absorbed by immunogen peptide.



Western Blot analysis of various cells using p39 Polyclonal Antibody cells nucleus.



Western blot analysis of lysates from HUVEC cells, using CDK5R2 Antibody. The lane on the right is blocked with the synthesized peptide.

### Storage

-20°C for one year

501 Changsheng S Rd, Nanhu Dist, Jiaxing, Zhejiang, China

Tel: 86 21 31007137 | E-mail: [save@bt-laboratory.com](mailto:save@bt-laboratory.com) | [www.bt-laboratory.com](http://www.bt-laboratory.com)