

## p40-phox Polyclonal Antibody

### Description

<b>Product type</b>	Primary Antibody
<b>Code</b>	BT-AP06789
<b>Host</b>	Rabbit
<b>Isotype</b>	IgG
<b>Size</b>	20ul, 50ul, 100ul
<b>Immunogen</b>	The antiserum was produced against synthesized peptide derived from human p40 phox. AA range:120-169
<b>Mol wt</b>	39031
<b>Species reactivity</b>	Human, Mouse
<b>Clonality</b>	Polyclonal
<b>Recommended application</b>	IHC-p, WB, ELISA
<b>Concentration</b>	1 mg/ml
<b>Full name</b>	p40-phox Antibody
<b>Synonyms</b>	NCF4; SH3PXD4; Neutrophil cytosol factor 4; NCF-4; Neutrophil NADPH oxidase factor 4; SH3 and PX domain-containing protein 4; p40-phox; p40phox

**This product is for research use only, not for use in human, therapeutic or diagnostic procedure.**

### Background

The protein encoded by NCF4 is a cytosolic regulatory component of the superoxide-producing phagocyte NADPH-oxidase, a multicomponent enzyme system important for host defense. This protein is preferentially expressed in cells of myeloid lineage. It interacts primarily with neutrophil cytosolic factor 2 (NCF2/p67-phox) to form a complex with neutrophil cytosolic factor 1 (NCF1/p47-phox), which further interacts with the small G protein RAC1 and translocates to the membrane upon cell stimulation. This complex then activates flavocytochrome b, the membrane-integrated catalytic core of the enzyme system. The PX domain of this protein can bind phospholipid products of the PI(3) kinase, which suggests its role in PI(3) kinase-mediated signaling events. The phosphorylation of neutrophil cytosolic factor 4 was found to negatively regulate the enzyme activity. Alternatively spliced transcript variants encoding distinct isoforms have been observed.

### Recommended Dilution

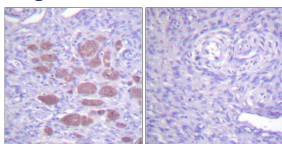
WB: 1: 500 - 2000

ELISA: 1: 10000

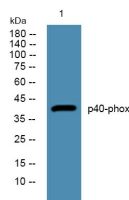
IHC: 1: 100 - 1: 300

Not yet tested in other applications.

### Images



Immunohistochemistry analysis of paraffin-embedded human ovary tissue, using p40 phox Antibody. The picture on the right is blocked with the synthesized peptide.



Western blot analysis of lysates from K562 cells, primary antibody was diluted at 1:1000, 4° over night

## Storage

-20°C for one year

501 Changsheng S Rd, Nanhu Dist, Jiaxing, Zhejiang, China

Tel: 86 21 31007137 | E-mail: [save@bt-laboratory.com](mailto:save@bt-laboratory.com) | [www.bt-laboratory.com](http://www.bt-laboratory.com)