

BNI3L Polyclonal Antibody

Description

Product type	Primary Antibody
Code	BT-AP06804
Host	Rabbit
Isotype	IgG
Size	20ul, 50ul, 100ul
Immunogen	Synthesized peptide derived from part region of human protein
Mol wt	N/A
Species reactivity	Human, Mouse
Clonality	Polyclonal
Recommended application	WB, ELISA
Concentration	1 mg/ml
Full name	BCL2/adenovirus E1B 19 kDa protein-interacting protein 3-like
Synonyms	BCL2/adenovirus E1B 19 kDa protein-interacting protein 3-like ;Adenovirus E1B19K-binding protein B5;BCL2/adenovirus E1B 19 kDa protein-interacting protein 3A;NIP3-like protein X;NIP3L

This product is for research use only, not for use in human, therapeutic or diagnostic procedure.

Background

This gene encodes a protein that belongs to the pro-apoptotic subfamily within the Bcl-2 family of proteins. The encoded protein binds to Bcl-2 and possesses the BH3 domain. The protein directly targets mitochondria and causes apoptotic changes, including loss of membrane potential and the release of cytochrome c.

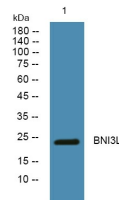
Recommended Dilution

WB: 1: 500 - 1: 2000

ELISA: 1: 5000 - 1: 20000

Not yet tested in other applications.

Images



Western blot analysis of lysates from HCT116 cells, primary antibody was diluted at 1:1000, 4°C overnight

Storage

-20°C for 1 year