

Bovine Serum Albumin Polyclonal Antibody

Description

Product type	Primary Antibody
Code	BT-AP06820
Host	Rabbit
Isotype	IgG
Size	20ul, 50ul, 100ul
Immunogen	Recombinant Protein of Bovine Serum Albumin
Mol wt	N/A
Species reactivity	Cow
Clonality	Polyclonal
Recommended application	WB, ELISA

Concentration

Full name

Synonyms

This product is for research use only, not for use in human, therapeutic or diagnostic procedure.

Background

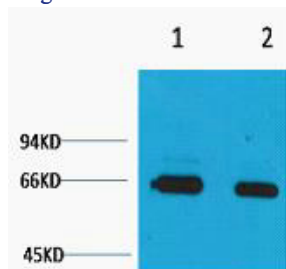
Bovine serum albumin (BSA) is the main protein synthesized in the liver that constitutes over 50% of total serum proteins. BSA is often used as a protein standard and can also be used in cell culture media, forensics, and foodstuffs.

Recommended Dilution

WB: 1: 2000 - 1: 5000

Not yet tested in other applications.

Images



Western blot analysis of Bovine Serum Albumin, Rabbit pAb diluted at 1:2000;1:5000. Secondary antibody was diluted at 1:20000

Storage

-20°C for 1 year

501 Changsheng S Rd, Nanhu Dist, Jiaxing, Zhejiang, China

Tel: 86 21 31007137 | E-mail: save@bt-laboratory.com | www.bt-laboratory.com