

p57 Polyclonal Antibody

Description

Product type	Primary Antibody
Code	BT-AP06843
Host	Rabbit
Isotype	IgG
Size	20ul, 50ul, 100ul
Immunogen	The antiserum was produced against synthesized peptide derived from human CDKN1C. AA range:11-60
Mol wt	32177
Species reactivity	Human
Clonality	Polyclonal
Recommended application	WB, IHC-p, ELISA
Concentration	1 mg/ml
Full name	p57 Antibody
Synonyms	CDKN1C; KIP2; Cyclin-dependent kinase inhibitor 1C; Cyclin-dependent kinase inhibitor p57; p57Kip2

This product is for research use only, not for use in human, therapeutic or diagnostic procedure.

Background

CDKN1C is imprinted, with preferential expression of the maternal allele. The cyclin dependent kinase inhibitor 1C is a tight-binding, strong inhibitor of several G1 cyclin/Cdk complexes and a negative regulator of cell proliferation. Mutations in this gene are implicated in sporadic cancers and Beckwith-Wiedemann syndrome, suggesting that CDKN1C is a tumor suppressor candidate. Three transcript variants encoding two different isoforms have been found for this gene.

Recommended Dilution

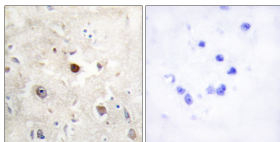
WB: 1: 500 - 1: 2000

IHC: 1: 100 - 1: 300

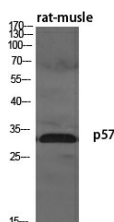
ELISA: 1: 10000

Not yet tested in other applications.

Images

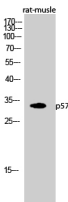


Immunohistochemistry analysis of paraffin-embedded human brain, using p57KIP2 Antibody. The picture on the right is blocked with the synthesized peptide.



Western Blot analysis of various cells using p57 Polyclonal Antibody diluted at 1:500

Western Blot analysis of rat-muscle cells using p57 Polyclonal Antibody diluted at 1:500



Storage

-20°C for one year

501 Changsheng S Rd, Nanhu Dist, Jiaxing, Zhejiang, China
Tel: 86 21 31007137 | E-mail: save@bt-laboratory.com | www.bt-laboratory.com