

## p57 Polyclonal Antibody

### Description

<b>Product type</b>	Primary Antibody
<b>Code</b>	BT-AP06844
<b>Host</b>	Rabbit
<b>Isotype</b>	IgG
<b>Size</b>	20ul, 50ul, 100ul
<b>Immunogen</b>	The antiserum was produced against synthesized peptide derived from human p57 Kip2. AA range:267-316
<b>Mol wt</b>	32177
<b>Species reactivity</b>	Human, Mouse
<b>Clonality</b>	Polyclonal
<b>Recommended application</b>	WB, IF, ELISA
<b>Concentration</b>	1 mg/ml
<b>Full name</b>	p57 Antibody
<b>Synonyms</b>	CDKN1C; KIP2; Cyclin-dependent kinase inhibitor 1C; Cyclin-dependent kinase inhibitor p57; p57Kip2

**This product is for research use only, not for use in human, therapeutic or diagnostic procedure.**

### Background

CDKN1C is imprinted, with preferential expression of the maternal allele. The cyclin dependent kinase inhibitor 1C is a tight-binding, strong inhibitor of several G1 cyclin/Cdk complexes and a negative regulator of cell proliferation. Mutations in this gene are implicated in sporadic cancers and Beckwith-Wiedemann syndrome, suggesting that CDKN1C is a tumor suppressor candidate. Three transcript variants encoding two different isoforms have been found for this gene.

### Recommended Dilution

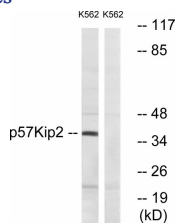
WB: 1: 500 - 1: 2000

IF: 1: 200 - 1: 1000

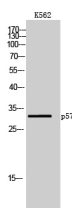
ELISA: 1: 5000

Not yet tested in other applications.

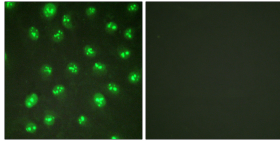
### Images



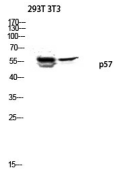
Western blot analysis of lysates from K562 cells, using p57 Kip2 Antibody. The lane on the right is blocked with the synthesized peptide.



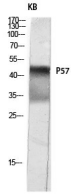
Western Blot analysis of K562 cells using p57 Polyclonal Antibody diluted at 1:1000



Immunofluorescence analysis of HUVEC cells, using p57 Kip2 Antibody. The picture on the right is blocked with the synthesized peptide.



Western blot analysis of 293T 3T3 lysis using p57 antibody. Antibody was diluted at 1:1000



Western blot analysis of KB lysis using p57 antibody. Antibody was diluted at 1:1000

### Storage

-20°C for one year

501 Changsheng S Rd, Nanhu Dist, Jiaxing, Zhejiang, China

Tel: 86 21 31007137 | E-mail: [save@bt-laboratory.com](mailto:save@bt-laboratory.com) | [www.bt-laboratory.com](http://www.bt-laboratory.com)