

p68 RNA Helicase Polyclonal Antibody

Description

Product type	Primary Antibody
Code	BT-AP06847
Host	Rabbit
Isotype	IgG
Size	20ul, 50ul, 100ul
Immunogen	The antiserum was produced against synthesized peptide derived from human DDX5/DEAD-box Protein 5. AA range:565-614
Mol wt	69148
Species reactivity	Human, Mouse, Rat
Clonality	Polyclonal
Recommended application	WB, IF, ELISA
Concentration	1 mg/ml
Full name	p68 RNA Helicase Antibody
Synonyms	DDX5; G17P1; HELR; HLR1; Probable ATP-dependent RNA helicase DDX5; DEAD box protein 5; RNA helicase p68

This product is for research use only, not for use in human, therapeutic or diagnostic procedure.

Background

DEAD box proteins, characterized by the conserved motif Asp-Glu-Ala-Asp (DEAD), are putative RNA helicases. They are implicated in a number of cellular processes involving alteration of RNA secondary structure, such as translation initiation, nuclear and mitochondrial splicing, and ribosome and spliceosome assembly. Based on their distribution patterns, some members of this family are believed to be involved in embryogenesis, spermatogenesis, and cellular growth and division. DDX5 encodes a DEAD box protein, which is a RNA-dependent ATPase, and also a proliferation-associated nuclear antigen, specifically reacting with the simian virus 40 tumor antigen. Alternative splicing results in multiple transcript variants.

Recommended Dilution

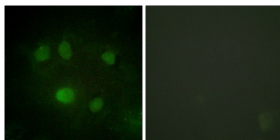
WB: 1: 500 - 1: 2000

IF: 1: 200 - 1: 1000

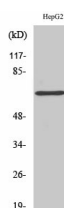
ELISA: 1: 20000

Not yet tested in other applications.

Images



Immunofluorescence analysis of HeLa cells, using DDX5/DEAD-box Protein 5 Antibody. The picture on the right is blocked with the synthesized peptide.



Western Blot analysis of various cells using p68 RNA Helicase Polyclonal Antibody cells nucleus.

Storage

-20°C for one year

501 Changsheng S Rd, Nanhu Dist, Jiaxing, Zhejiang, China

Tel: 86 21 31007137 | E-mail: save@bt-laboratory.com | www.bt-laboratory.com