

## p70 S6 kinase Alpha Polyclonal Antibody

### Description

<b>Product type</b>	Primary Antibody
<b>Code</b>	BT-AP06849
<b>Host</b>	Rabbit
<b>Isotype</b>	IgG
<b>Size</b>	20ul, 50ul, 100ul
<b>Immunogen</b>	Recombinant Protein of p70 S6 kinase $\alpha$
<b>Mol wt</b>	59140
<b>Species reactivity</b>	Human, Mouse, Rat
<b>Clonality</b>	Polyclonal
<b>Recommended application</b>	WB, IF, IHC-p
<b>Concentration</b>	1 mg/ml
<b>Full name</b>	p70 S6 kinase alpha Antibody
<b>Synonyms</b>	RPS6KB1; STK14A; Ribosomal protein S6 kinase beta-1; S6K-beta-1; S6K1; 70 kDa ribosomal protein S6 kinase 1; P70S6K1; p70-S6K 1; Ribosomal protein S6 kinase I; Serine/threonine-protein kinase 14A; p70

This product is for research use only, not for use in human, therapeutic or diagnostic procedure.

### Background

RPS6KB1 (ribosomal protein S6 kinase B1) encodes a member of the ribosomal S6 kinase family of serine/threonine kinases. The encoded protein responds to mTOR (mammalian target of rapamycin) signaling to promote protein synthesis, cell growth, and cell proliferation. Activity of RPS6KB1 has been associated with human cancer. Alternatively spliced transcript variants have been observed. The use of alternative translation start sites results in isoforms with longer or shorter N-termini which may differ in their subcellular localizations. There are two pseudogenes for RPS6KB1 on chromosome 17.

### Recommended Dilution

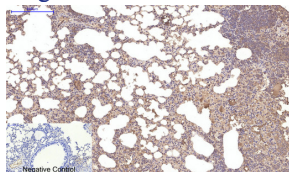
WB: 1: 1000 - 2000

IHC: 1: 200 - 500

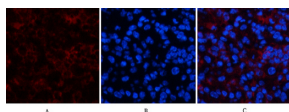
IF: 1: 200

Not yet tested in other applications.

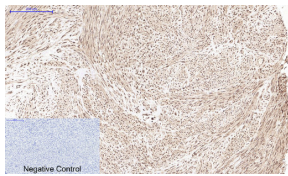
### Images



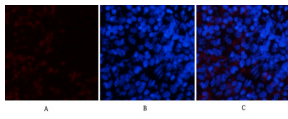
Immunohistochemical analysis of paraffin-embedded Mouse-lung tissue. 1,p70 S6 kinase  $\alpha$  Polyclonal Antibody was diluted at 1:200(4°C,overnight). 2, Sodium citrate pH 6.0 was used for antibody retrieval(>98°C,20min). 3,Secondary antibody was diluted at 1:200(room temperature, 30min). Negative control was used by secondary antibody only.



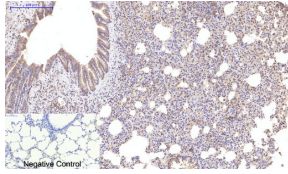
Immunofluorescence analysis of mouse-spleen tissue. 1,p70 S6 kinase  $\alpha$  Polyclonal Antibody(red) was diluted at 1:200(4°C,overnight). 2, Cy3 labeled Secondary antibody was diluted at 1:300(room temperature, 50min).3, Picture B: DAPI(blue) 10min. Picture A:Target. Picture B: DAPI. Picture C: merge of A+B



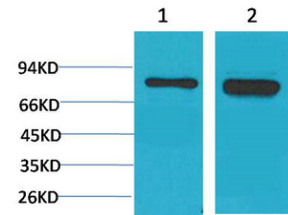
Immunohistochemical analysis of paraffin-embedded Human-uterus tissue. 1,p70 S6 kinase  $\alpha$  Polyclonal Antibody was diluted at 1:200(4°C,overnight). 2, Sodium citrate pH 6.0 was used for antibody retrieval(>98°C,20min). 3,Secondary antibody was diluted at 1:200(room tempeRature, 30min). Negative control was used by secondary antibody only.



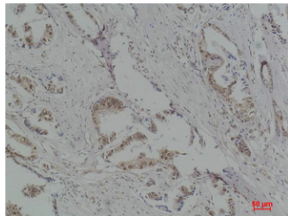
Immunofluorescence analysis of rat-spleen tissue. 1,p70 S6 kinase  $\alpha$  Polyclonal Antibody(red) was diluted at 1:200(4°C,overnight). 2, Cy3 labeled Secondary antibody was diluted at 1:300(room temperature, 50min).3, Picture B: DAPI(blue) 10min. Picture A:Target. Picture B: DAPI. Picture C: merge of A+B



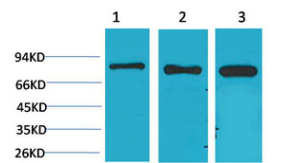
Immunohistochemical analysis of paraffin-embedded Rat-lung tissue. 1,p70 S6 kinase  $\alpha$  Polyclonal Antibody was diluted at 1:200(4°C,overnight). 2, Sodium citrate pH 6.0 was used for antibody retrieval(>98°C,20min). 3,Secondary antibody was diluted at 1:200(room tempeRature, 30min). Negative control was used by secondary antibody only.



Western blot analysis of 1) 3T3, 2) PC12 using p70 S6 kinase  $\alpha$  Polyclonal Antibody. Secondary antibody was diluted at 1:20000

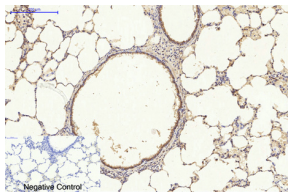


Immunohistochemical analysis of paraffin-embedded Human Breast Carcinoma using p70 S6 kinase  $\alpha$  Polyclonal Antibody.

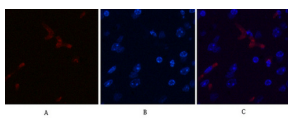


Western blot analysis of 1) HeLa, 2) 3T3, 3) PC12 using p70 S6 kinase  $\alpha$  Polyclonal Antibody. Secondary antibody was diluted at 1:20000

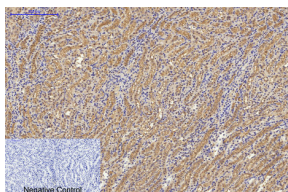
Western blot detection of p70S6 in human breast cancer cell line MCF-7(A), T47D(B), MDA-MB-231(C) and Cal51 (D) using p70S6 rabbit polyAb (YM3426, 1:1000 diluted).Predicted band size: 70kDa.Observed band size:70kDa. Picture was kindly provided by our customer from Tianjin Medical University Cancer Institute and Hospital



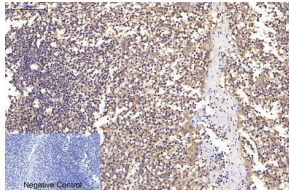
Immunohistochemical analysis of paraffin-embedded Rat-lung tissue. 1,p70 S6 kinase  $\alpha$  Polyclonal Antibody was diluted at 1:200(4°C,overnight). 2, Sodium citrate pH 6.0 was used for antibody retrieval(>98°C,20min). 3,Secondary antibody was diluted at 1:200(room tempeRature, 30min). Negative control was used by secondary antibody only.



Immunofluorescence analysis of Mouse-brain tissue. 1,p70 S6 kinase  $\alpha$  Polyclonal Antibody(red) was diluted at 1:200(4°C,overnight). 2, Cy3 labeled Secondary antibody was diluted at 1:300(room temperature, 50min).3, Picture B: DAPI(blue) 10min. Picture A:Target. Picture B: DAPI. Picture C: merge of A+B



Immunohistochemical analysis of paraffin-embedded Mouse-kidney tissue. 1,p70 S6 kinase  $\alpha$  Polyclonal Antibody was diluted at 1:200(4°C,overnight). 2, Sodium citrate pH 6.0 was used for antibody retrieval(>98°C,20min). 3,Secondary antibody was diluted at 1:200(room tempeRature, 30min). Negative control was used by secondary antibody only.



Immunohistochemical analysis of paraffin-embedded Human-Tonsil tissue. 1,p70 S6 kinase  $\alpha$  Polyclonal Antibody was diluted at 1:200(4°C,overnight). 2, Sodium citrate pH 6.0 was used for antibody retrieval(>98°C,20min). 3,Secondary antibody was diluted at 1:200(room temperature, 30min). Negative control was used by secondary antibody only.

### Storage

-20°C for one year

501 Changsheng S Rd, Nanhu Dist, Jiaxing, Zhejiang, China

Tel: 86 21 31007137 | E-mail: [save@bt-laboratory.com](mailto:save@bt-laboratory.com) | [www.bt-laboratory.com](http://www.bt-laboratory.com)