

BSSP4 Polyclonal Antibody

Description

Product type	Primary Antibody
Code	BT-AP06852
Host	Rabbit
Isotype	IgG
Size	20ul, 50ul, 100ul
Immunogen	Synthesized peptide derived from part region of human protein
Mol wt	N/A
Species reactivity	Human, Rat, Mouse
Clonality	Polyclonal
Recommended application	WB, ELISA
Concentration	1 mg/ml
Full name	Brain-specific serine protease 4
Synonyms	Brain-specific serine protease 4 ;BSSP-4;EC 3.4.21.-;Serine protease 22;Serine protease 26;Trypsase epsilon

This product is for research use only, not for use in human, therapeutic or diagnostic procedure.

Background

This gene encodes a member of the trypsin family of serine proteases. The enzyme is expressed in the airways in a developmentally regulated manner. The gene is part of a cluster of serine protease genes on chromosome 16.

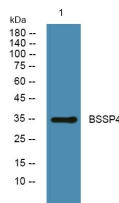
Recommended Dilution

WB: 1: 500 - 1: 2000

ELISA: 1: 5000 - 1: 20000

Not yet tested in other applications.

Images



Western blot analysis of lysates from KB cells, primary antibody was diluted at 1:1000, 4°C overnight

Storage

-20°C for 1 year