

CAPS1 Rabbit Polyclonal Antibody

Description

Product type	Primary Antibody
Code	BT-AP06855
Host	Rabbit
Isotype	IgG
Size	100ul, 50ul, 20ul
Immunogen	Synthesized peptide derived from human CAPS1
Mol wt	148830
Species reactivity	Human, Mouse, Rat
Clonality	Polyclonal
Recommended application	WB
Concentration	1 mg/ml
Full name	CAPS1
Synonyms	CAPS1

This product is for research use only, not for use in human, therapeutic or diagnostic procedure.

Background

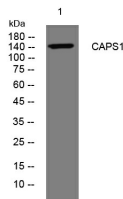
This gene encodes a novel neural/endocrine-specific cytosolic and peripheral membrane protein required for the Ca²⁺-regulated exocytosis of secretory vesicles. The protein acts at a stage in exocytosis that follows ATP-dependent priming, which involves the essential synthesis of phosphatidylinositol 4,5-bisphosphate (PtdIns(4,5)P₂). Alternative splicing has been observed at this locus and three variants, encoding distinct isoforms, are described.

Recommended Dilution

WB: 1: 500 - 1: 2000

Not yet tested in other applications.

Images



Western blot analysis of lysates from SW480 cells, primary antibody was diluted at 1:1000, 4°C overnight

Storage

-20°C for 1 year