

## p73 (Acetyl Lys321) Polyclonal Antibody

### Description

<b>Product type</b>	Primary Antibody
<b>Code</b>	BT-AP06860
<b>Host</b>	Rabbit
<b>Isotype</b>	IgG
<b>Size</b>	20ul, 50ul, 100ul
<b>Immunogen</b>	The antiserum was produced against synthesized Acetyl-peptide derived from human p73 around the Acetylation site of Lys321. AA range:281-330
<b>Mol wt</b>	69623
<b>Species reactivity</b>	Human
<b>Clonality</b>	Polyclonal
<b>Recommended application</b>	WB, IHC-p, ELISA
<b>Concentration</b>	1 mg/ml
<b>Full name</b>	p73 (Acetyl Lys321) Antibody
<b>Synonyms</b>	TP73; P73; Tumor protein p73; p53-like transcription factor; p53-related protein

**This product is for research use only, not for use in human, therapeutic or diagnostic procedure.**

### Background

TP73 encodes a member of the p53 family of transcription factors involved in cellular responses to stress and development. It maps to a region on chromosome 1p36 that is frequently deleted in neuroblastoma and other tumors, and thought to contain multiple tumor suppressor genes. The demonstration that TP73 is monoallelically expressed (likely from the maternal allele), supports the notion that it is a candidate gene for neuroblastoma. Many transcript variants resulting from alternative splicing and/or use of alternate promoters have been found for TP73, but the biological validity and the full-length nature of some variants have not been determined.

### Recommended Dilution

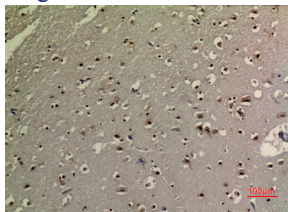
WB: 1: 500 - 1: 2000

IHC-p: 1: 100 - 300

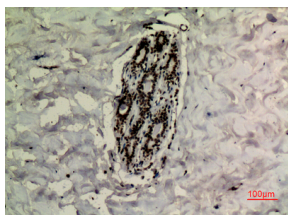
ELISA: 1: 20000

Not yet tested in other applications.

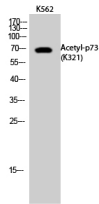
### Images



Immunohistochemical analysis of paraffin-embedded human-brain, antibody was diluted at 1:100



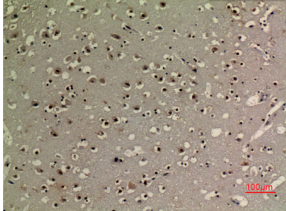
Immunohistochemical analysis of paraffin-embedded human-breast, antibody was diluted at 1:100



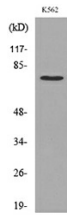
Western Blot analysis of K562 cells using Acetyl-p73 (K321) Polyclonal Antibody. Secondary antibody was diluted at 1:20000



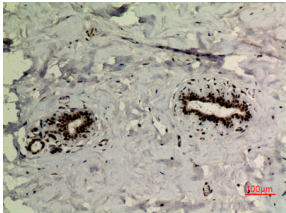
Western Blot analysis of K562 cells using Acetyl-p73 (K321) Polyclonal Antibody. Secondary antibody was diluted at 1:20000



Immunohistochemical analysis of paraffin-embedded human-brain, antibody was diluted at 1:100



Western blot analysis of lysate from K562 cells, using p73 (Acetyl-Lys321) Antibody.



Immunohistochemical analysis of paraffin-embedded human-breast, antibody was diluted at 1:100

### Storage

-20°C for one year

501 Changsheng S Rd, Nanhu Dist, Jiaxing, Zhejiang, China

Tel: 86 21 31007137 | E-mail: [save@bt-laboratory.com](mailto:save@bt-laboratory.com) | [www.bt-laboratory.com](http://www.bt-laboratory.com)