

p73 Polyclonal Antibody

Description

Product type	Primary Antibody
Code	BT-AP06862
Host	Rabbit
Isotype	IgG
Size	20ul, 50ul, 100ul
Immunogen	The antiserum was produced against synthesized peptide derived from human p73 around the non-acetylation site of Lys321. AA range:281-330
Mol wt	69623
Species reactivity	Human
Clonality	Polyclonal
Recommended application	WB, IHC-p, ELISA
Concentration	1 mg/ml
Full name	p73 Antibody
Synonyms	TP73; P73; Tumor protein p73; p53-like transcription factor; p53-related protein

This product is for research use only, not for use in human, therapeutic or diagnostic procedure.

Background

TP73 encodes a member of the p53 family of transcription factors involved in cellular responses to stress and development. It maps to a region on chromosome 1p36 that is frequently deleted in neuroblastoma and other tumors, and thought to contain multiple tumor suppressor genes. The demonstration that this gene is monoallelically expressed (likely from the maternal allele), supports the notion that it is a candidate gene for neuroblastoma. Many transcript variants resulting from alternative splicing and/or use of alternate promoters have been found for this gene, but the biological validity and the full-length nature of some variants have not been determined.

Recommended Dilution

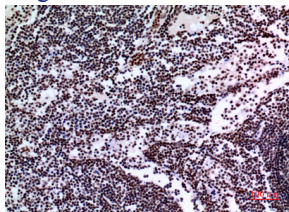
WB: 1: 500 - 1: 2000

IHC-p: 1: 100 - 1: 300

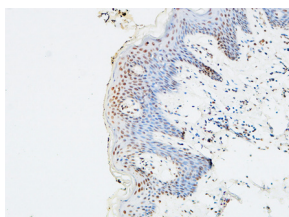
ELISA: 1: 20000

Not yet tested in other applications.

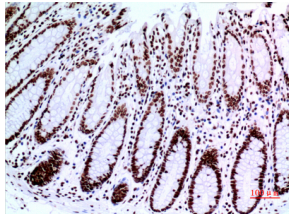
Images



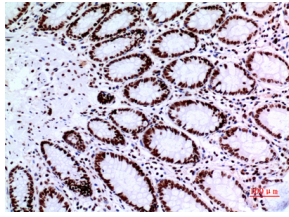
Immunohistochemical analysis of paraffin-embedded human-lymph-gland, antibody was diluted at 1:100



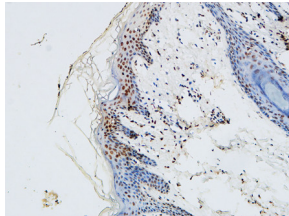
Immunohistochemical analysis of paraffin-embedded Human skin. 1, Antibody was diluted at 1:200(4° overnight). 2, High-pressure and temperature EDTA, pH8.0 was used for antigen retrieval. 3,Secondary antibody was diluted at 1:200(room temperature, 30min).



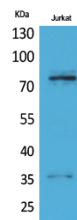
Immunohistochemical analysis of paraffin-embedded human-colon, antibody was diluted at 1:100



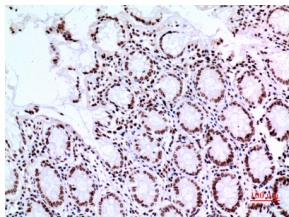
Immunohistochemical analysis of paraffin-embedded human-colon, antibody was diluted at 1:100



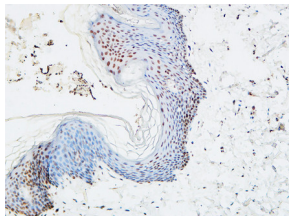
Immunohistochemical analysis of paraffin-embedded Human skin. 1, Antibody was diluted at 1:200(4° overnight). 2, High-pressure and temperature EDTA, pH8.0 was used for antigen retrieval. 3,Secondary antibody was diluted at 1:200(room temperature, 30min).



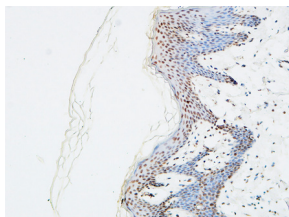
Western Blot analysis of Jurkat cells using p73 Polyclonal Antibody. Secondary antibody was diluted at 1:20000 cells nucleus.



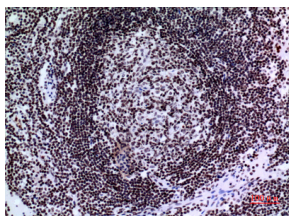
Immunohistochemical analysis of paraffin-embedded human-colon, antibody was diluted at 1:100



Immunohistochemical analysis of paraffin-embedded Human skin. 1, Antibody was diluted at 1:200(4° overnight). 2, High-pressure and temperature EDTA, pH8.0 was used for antigen retrieval. 3,Secondary antibody was diluted at 1:200(room temperature, 30min).



Immunohistochemical analysis of paraffin-embedded Human skin. 1, Antibody was diluted at 1:200(4° overnight). 2, High-pressure and temperature EDTA, pH8.0 was used for antigen retrieval. 3,Secondary antibody was diluted at 1:200(room temperature, 30min).



Immunohistochemical analysis of paraffin-embedded human-lymph-gland, antibody was diluted at 1:100

Storage

-20°C for one year

501 Changsheng S Rd, Nanhu Dist, Jiaxing, Zhejiang, China
Tel: 86 21 31007137 | E-mail: save@bt-laboratory.com | www.bt-laboratory.com