

PABP3 Polyclonal Antibody

Description

Product type	Primary Antibody
Code	BT-AP06872
Host	Rabbit
Isotype	IgG
Size	20ul, 50ul, 100ul
Immunogen	The antiserum was produced against synthesized peptide derived from human PABPC3. AA range:352-401
Mol wt	70031
Species reactivity	Human
Clonality	Polyclonal
Recommended application	WB, IHC-p, ELISA
Concentration	1 mg/ml
Full name	PABP3 Antibody
Synonyms	PABPC3; PABP3; PABPL3; Polyadenylate-binding protein 3; PABP-3; Poly(A)-binding protein 3; Testis-specific poly(A)-binding protein

This product is for research use only, not for use in human, therapeutic or diagnostic procedure.

Background

PABPC3 encodes a poly (A) binding protein. The protein shuttles between the nucleus and cytoplasm and binds to the 3' poly (A) tail of eukaryotic messenger RNAs via RNA-recognition motifs. The binding of this protein to poly (A) promotes ribosome recruitment and translation initiation; it is also required for poly (A) shortening which is the first step in mRNA decay. PABPC3 is part of a small gene family including three protein-coding genes and several pseudogenes.

Recommended Dilution

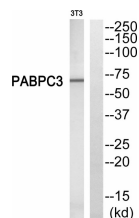
WB: 1: 500 - 1: 2000

ELISA: 1: 20000

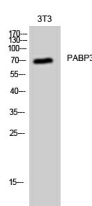
.IHC-p: 1: 50 - 300

Not yet tested in other applications.

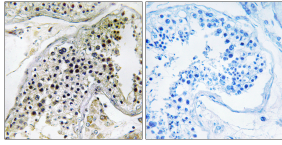
Images



Western blot analysis of PABPC3 Antibody. The lane on the right is blocked with the PABPC3 peptide.



Western Blot analysis of 3T3 cells using PABP3 Polyclonal Antibody



Immunohistochemistry analysis of paraffin-embedded human testis, using PABPC3 Antibody. The lane on the right is blocked with the PABPC3 peptide.

Storage

-20°C for one year

501 Changsheng S Rd, Nanhu Dist, Jiaxing, Zhejiang, China

Tel: 86 21 31007137 | E-mail: save@bt-laboratory.com | www.bt-laboratory.com